

02

Door and commercial low-rise solutions



SENIOR ARCHITECTURAL SYSTEMS

A safe and secure range of stylish
aluminium doors and commercial
entrance systems









Welcome to Senior

From thermally-efficient aluminium windows to slimline curtain wall systems and robust commercial doors, Senior offers a stylish suite of products designed to meet the requirements of a wide range of projects. At Senior we have the products and the technical expertise to bring even the most challenging design briefs clearly into view.

| | | |
|---|-----------------------------|---|
| 02 | Contents | |
| Senior Door and commercial low-rise solutions | Introduction | 04 |
| | Built around you | 06 |
| | Why specify Senior? | 08 |
| | Make an impressive entrance | 10 |
| | Keeping it green | 12 |
| | Door systems | 15 |
| | Commercial low-rise systems | 41 |
| | Case studies | 51 |
|  SENIOR ARCHITECTURAL SYSTEMS | |  |

Care has been taken to ensure that the contents of this publication are accurate. Due to our continual process of development and innovation we retain the right to change specifications without prior notice. Please speak to us to discuss your specific project requirements ahead of placing an order.



Introduction



As the largest privately owned aluminium fenestration systems house in the UK, we design, manufacture and supply innovative and high-performance aluminium windows, doors and curtain wall systems for use on projects across the sectors. With a strong focus on supply chain collaboration, we recognise the value of relationships and work closely with fabricators, contractors and architects to deliver fenestration solutions that perform as well as they look.

Our state-of-the-art facilities in South Yorkshire include our main manufacturing base in Denaby, which is home to our in-house powder coating paint line, and our new thermal improvement facility in Rotherham. Our dedicated distribution centre in Scotland further supports our work on projects across the UK.



Built around you

Our innovative products speak for themselves but we believe the specification process should be a conversation and through early engagement, we can bring valuable solutions to the table. From help with product choice and thermal calculations right through to guidance during the fabrication and installation process, we have the expertise and resources to support you every step of the way.



BES 6001: Issue 3.1
Cert/Ref No. RS0054





Why specify Senior?

We've worked with some of the biggest names in construction on a variety of projects across the sectors including education, healthcare, stadia and leisure, commercial mixed-used developments and high-rise residential schemes. Our portfolio may be

varied but one thing that remains consistent is the way we work and that's why we have established strong supply chain agreements and enjoy regular repeat business.



Sustainable manufacturing



From offering **energy-efficient and fully recyclable** aluminium fenestration products, to implementing various **low carbon initiatives** throughout our manufacturing facility, we're committed to reducing carbon emissions both on and off site. We're also fully **accredited to BRE Global's BES 6001 standard and ISO 14001**.

Complete product range



All our products are **designed to perform** as well as they look, from the patented **thermal-efficiency** of our PURE® windows and doors, to our **slimline** curtain wall systems, and **robust** commercial door range. With solutions for both **commercial and residential** settings, we can offer the full package.

Expert design and technical support



Our **knowledgeable team** of architectural advisors are regionally based so they can work closely with you to help deliver **the most effective fenestration package** for your project. Through early engagement, we can **assist with everything** from product choice, technical design detailing and U-values, to help with carbon calculations and BREEAM ratings.

In-house powder coating facility



Our **state-of-the-art powder coating facility** not only significantly **reduces the amount of waste** product sent to landfill each year but also **reduces the risk of outsourcing** to another supplier. We can **manage the process completely in-house**, offering a **large choice of colours and protective finishes** for all our aluminium fenestration systems.

UK designed and manufactured



With two main manufacturing sites in **South Yorkshire**, including our new thermal improvement facility in **Rotherham**, and our distribution centre strategically located in Livingston, Scotland, we can supply aluminium fenestration solutions for projects nationwide. As the UK's largest privately owned aluminium fenestration systems house, we also have the autonomy to offer a **flexible and friendly service** that meets the individual needs of all our customers.

Secure and reliable supply chains



We believe in the power of supply chain collaboration which is why we're committed to maintaining positive relationships with our fabricator and installer base by offering **technical advice, product training and on site support**. We have a number of **trusted and experienced partners** and together, have a **proven track record** of delivering projects across the sectors.



Make an impressive entrance

From robust commercial doors and reliable shop front systems to stylish patio doors and bi-folds, Senior Architectural Systems' extensive collection of aluminium door systems has been developed to offer a wide range of solutions for a wide range of projects.

All of Senior's doors and entrance systems are manufactured here in the UK and are fully compatible with our full range of aluminium windows and curtain walling. Not only does this provide great design flexibility but also the convenience and reassurance of working with a sole supplier, and one that has a proven track record of delivering projects across both the residential and commercial sectors.

Designed to be safe, secure and easy to fabricate, install and maintain, all of Senior's doors and low-rise commercial systems have also been developed to boost energy efficiency and offer 'cradle-to-cradle' recyclability. The patented PURE® range of aluminium single, double, folding sliding and sliding doors also offer exceptional thermal-efficiency and achieve low U-values to help comply with Part L of the Building Regulations.





Key Features



Doors designed to meet
PAS 24 security requirements



High thermal
performance



Fully compatible with our aluminium
curtain wall and window systems



Solutions for both commercial
and residential schemes



Available in an unlimited choice of
colours and finishes, inside and out



Extensive range of styles
and configurations



Keeping it green

Sustainability isn't just a key part of our product offering, it's a fundamental part of our company ethos.

From our commitment to ensuring our manufacturing techniques are as carbon-neutral as possible to developing an energy-efficient product range that offers 'cradle-to-cradle' recyclability, we strive to limit the environmental impact of all our business operations at every stage.

Our products maximise the unique properties of aluminium, which combines exceptional strength with the ability to be endlessly recycled with no detriment to its quality. The durability of the material and closed-loop recycling process make aluminium fenestration systems a truly sustainable choice.

One of our flagship initiatives has been the investment in our in-house powder coating facility which is one of the most efficient of its kind and has helped significantly reduce the amount of waste generated. We also hold accreditation to the BRE Global's BES 6001 standard which confirms that all our products are manufactured using sustainably and ethically sourced recycled aluminium.

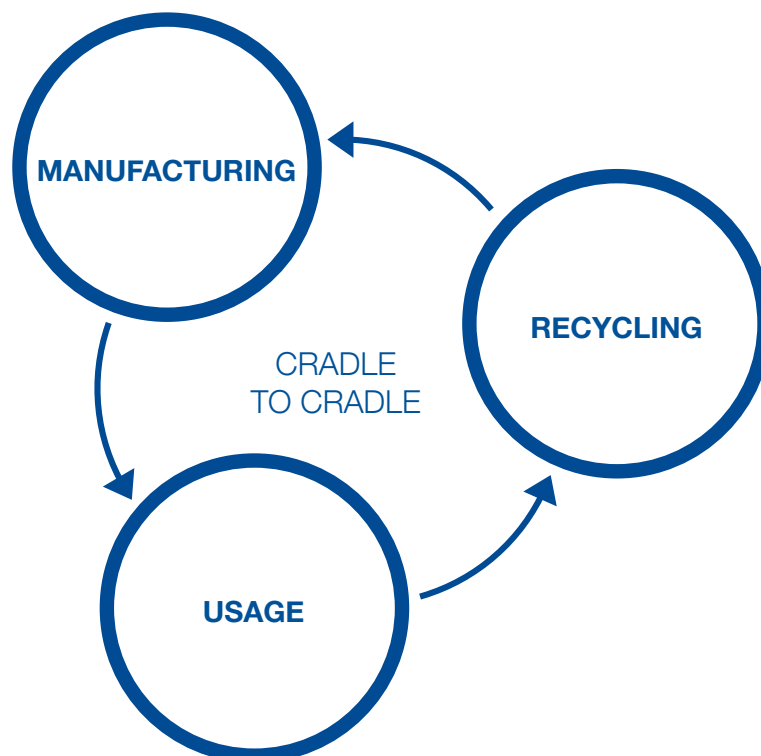
We're also reducing our carbon-footprint in the following ways:

- In-house PUR processing line for the sustainable manufacture of the PRe® system.
- Efficient grey-water recovery system in our factory recycles water used in the manufacturing process.
- A biomass boiler heats our warehouse and is fuelled by waste timber from wooden packaging.
- We've invested in a five-star eco delivery fleet and on site electric car charging points for staff and visitors.





Closed-loop recyclability





DOOR SYSTEMS

**A flexible range of commercial
and residential style aluminium
door systems.**

PURe® doors:

An innovative range of stylish aluminium doors with unbeatable thermal performance.

PURe® door suite

A revolutionary range of aluminium folding and sliding doors, with an expanded polyurethane thermal barrier, giving exceptional thermal performance and U-values as low as $0.88 \text{ W/m}^2\text{K}$ when calculated as a CEN Standard door. Suitable for both domestic and light commercial new builds and refurbishments.

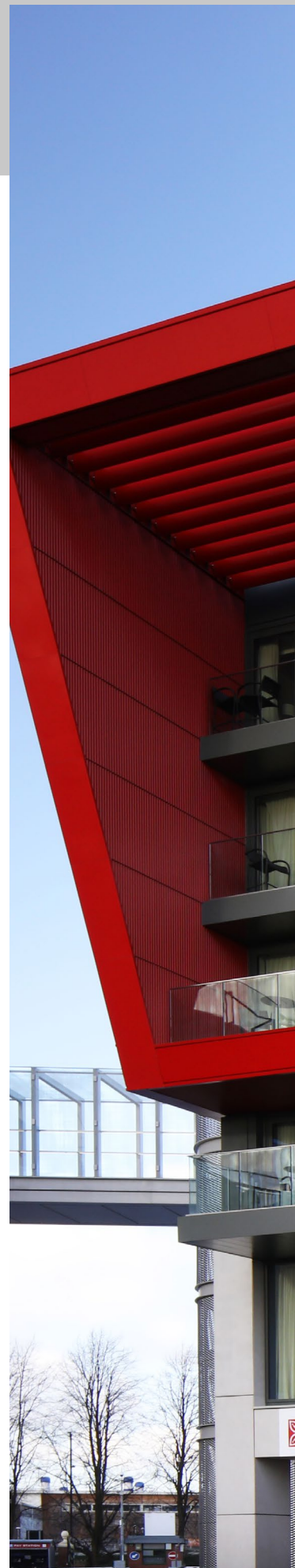
Sustainable and
built to last

Compatible with both double
and triple glazed units for extra
thermal efficiency

Unique patented
PURe® thermal barrier
made from expanded
polyurethane

PURe®
DOOR SYSTEMS

*Shown: PURe®
FOLD door system*





PURe[®] door suite system key features

The PURe[®] door suite offers a range of revolutionary folding and sliding doors with an innovative enhanced thermal barrier manufactured from expanded polyurethane (PUR) allowing ultra-low U-values to be achieved. Designed for maximum performance and

aesthetics, our PURe[®] doors complement our popular PURe[®] window range and are fully compatible with all our curtain walling. Available pre-finished in an almost unlimited range of colours and finishes.



Thermal performance

Impressive thermal performance and stylish looks, offering ultra-low U-values.




U-values
as low as*

0.88 W/m²K**



Contributes to a positive BREEAM rating*

*dependent on specific product and configurations.
**based on PURe[®] FOLD double door 2000mm x 2180mm (+25%)



Technical

Fully weather and security tested, offering reliable performance and design flexibility.

Testing: weather rating

BS6375-1, BS6375-2 and BS6375-3

Contact us to discuss your specific project requirements

Average U-values


PURe[®] FOLD folding sliding option:
Commercial CEN Standard

| | |
|--------------------|------------|
| Double glazed unit | 1.3 W/m²K |
| Triple glazed unit | 0.88 W/m²K |

Safety and security




Official Police Security Initiative



Official Police Security Initiative

Flexible glazing sizes available



24mm 52mm

For further information about our range of PURe[®] door suite options and to discuss your specific requirements, contact our technical sales managers or architectural advisers.



PURe[®] door suite system options and sizing

Our innovative PURe[®] range of doors consists of sliding, folding, single and double swing styles available in a large variety of configurations.

PURe[®] FOLD Doors:

Designed with narrow sightlines and a high-tech roller design, our PURe[®] FOLD doors can achieve U-values as low as 0.88 W/m²K and have matching single and double doors. The PURe[®] FOLD doors can be specified in a range of styles including:

- PURe[®] FOLD folding sliding
- PURe[®] FOLD single swing
- PURe[®] FOLD double swing
- PURe[®] FOLD inward opening
- PURe[®] FOLD outward opening



PURe[®] FOLD doors
Maximum door sizes

| | |
|-----------------------------------|--------|
| Max door leaf width | 1000mm |
| Max door leaf height | 2616mm |
| Max outerframe height | 2700mm |
| Max weight <i>(per door leaf)</i> | 100kg |



PURe[®] doors options and sizing

Our PURe[®] SLIDE doors can achieve exceptionally low U-values, dependent on options and configurations. Both the inline slide and lift and slide configurations are also available as a slimline version with a 50mm interlock for uninterrupted views. A heavy-duty option is also available with the lift and slide option.

PURe[®] SLIDE Doors:

The PURe[®] SLIDE door range has a range of options and configurations including:

- PURe[®] SLIDE inline slide
- PURe[®] SLIDE lift and slide
- PURe[®] SLIDE slimline inline
- PURe[®] SLIDE slimline lift and slide



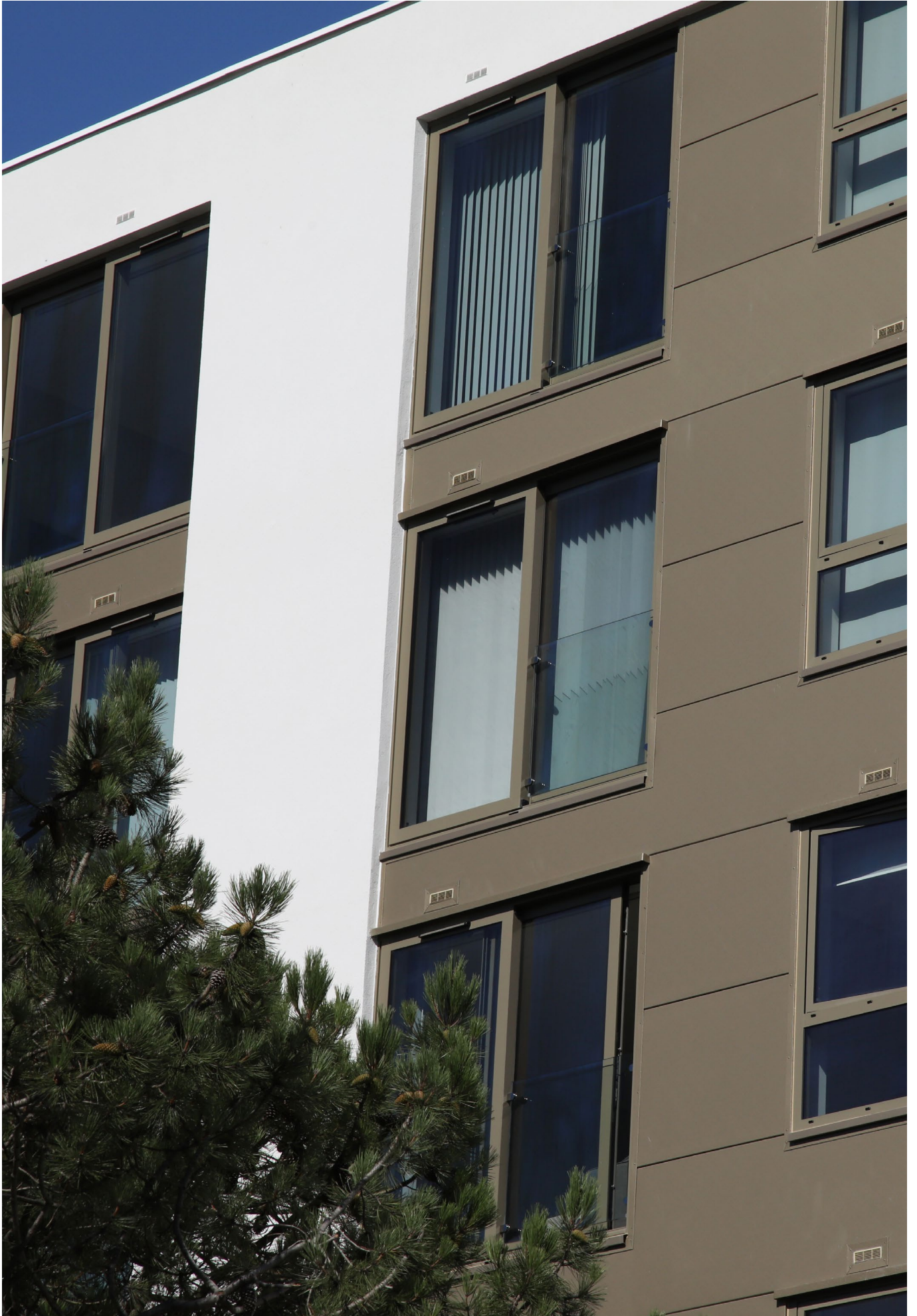
*PURe[®] SLIDE lift and slide
Maximum door sizes*

| | |
|---|--------|
| Max door leaf width | 3005mm |
| Max door leaf height | 2916mm |
| Max outerframe height | 3000mm |
| Max weight: standard (<i>per door leaf</i>) | 200kg |
| Max weight: heavy duty (<i>per door leaf</i>) | 300kg |

*PURe[®] SLIDE inline slide
Maximum door sizes*

| | |
|-------------------------------------|--------|
| Max door leaf width | 3005mm |
| Max door leaf height | 2916mm |
| Max outerframe height | 3000mm |
| Max weight (<i>per door leaf</i>) | 160kg |







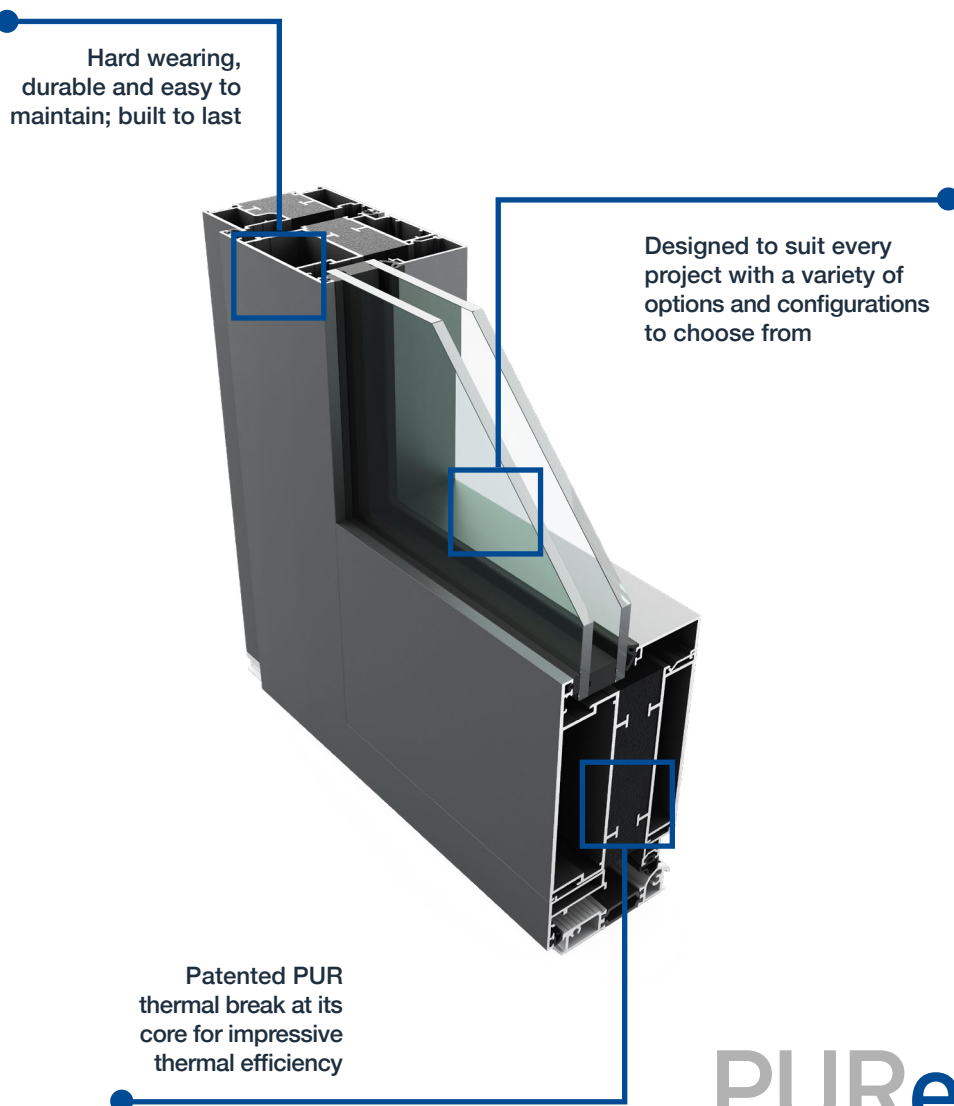


PURe® Commercial Door:

Our largest and strongest door yet; designed with our patented PURe® thermal break at its core.

PURe® commercial door

Featuring our innovative PUR thermal break to give impressive thermal efficiency and low U-values. Our PURe® commercial door is also available in a host of design options and configurations to suit every project. Ideal for both medium and high traffic areas; built to last with security in mind.



PURe®
DOOR SYSTEMS

PURe[®] commercial door key features

Brilliantly designed for ultra-high performance and with a host of design options, this modern door is the perfect fit for both medium and high traffic areas.

It is ideal for projects all across all sectors including education, healthcare, retail, business and residential.




Thermal performance

The high performance PUR thermal break provides impressive thermal-efficiency and can achieve U-values as low as 0.89 W/m²K when calculated as a commercial CEN standard door.




U-values
as low as
0.89 W/m²K



BREEAM[®]
Contributes to a positive
BREEAM rating*

*dependent on specific product and configurations.
**based on PURe[®] commercial double door 2000mm x 2180mm (+25%)



Technical

Brilliantly designed with security and thermally efficiency in mind; keeping the weather out and the warmth in.

Testing: weather rating

BS6375-1, BS6375-2 and BS6375-3


Differing door configurations produce different ratings. Please consult your technical sales manager or architectural advisor for further information.

Average U-values

PURe[®] commercial double door option:
Commercial CEN Standard


| | |
|--------------------|-------------------------|
| Double glazed unit | 1.3 W/m ² K |
| Triple glazed unit | 0.89 W/m ² K |

Safety and security



PAS 24


Secured by Design



Official Police Security Initiative

Multi-point locking hardware required

Flexible glazing sizes available



28mm 60mm

For further information about our PURe[®] commercial door and to discuss your specific requirements, contact our technical sales managers or architectural advisers.



PURe[®] commercial door options and sizing

The PURe[®] commercial door can be specified as both inward or outward opening single and double doors with a large host of design options and configurations. Designed to perform up to a maximum leaf size of 1400mm x 3000mm and 180kg, PURe[®] commercial doors are our largest

and most robust doors yet. Available in standard, thermally enhanced, electronic locking and a panic exit version, and with a choice of thresholds, finger trap option and floating mullions, they are ideal for medium and high traffic areas.



Maximum door sizes: standard

| | |
|----------------------|--------|
| Max door leaf width | 1400mm |
| Max door leaf height | 3000mm |

Maximum door sizes: electronic locking

| | |
|----------------------|--------|
| Max door leaf width | 1400mm |
| Max door leaf height | 2500mm |

Maximum door sizes: panic exit

| | |
|----------------------|--------|
| Max door leaf width | 1350mm |
| Max door leaf height | 2500mm |

Also available as a double door

Ali doors:

A stylish range of high-performance aluminium folding and slimline, inline sliding doors, suitable for both domestic and light commercial use.

Ali door suite

The Ali door suite offers a range of stylish and high performance sliding and folding doors, that are suitable for both light commercial and domestic projects. Both stylish and thermally efficient, Ali FOLD doors have been designed with a polyamide thermal break to give impressive thermal efficiency and are also available in an almost unlimited range of colours and finishes.

Stylish design,
ideal for both
light commercial
and domestic use

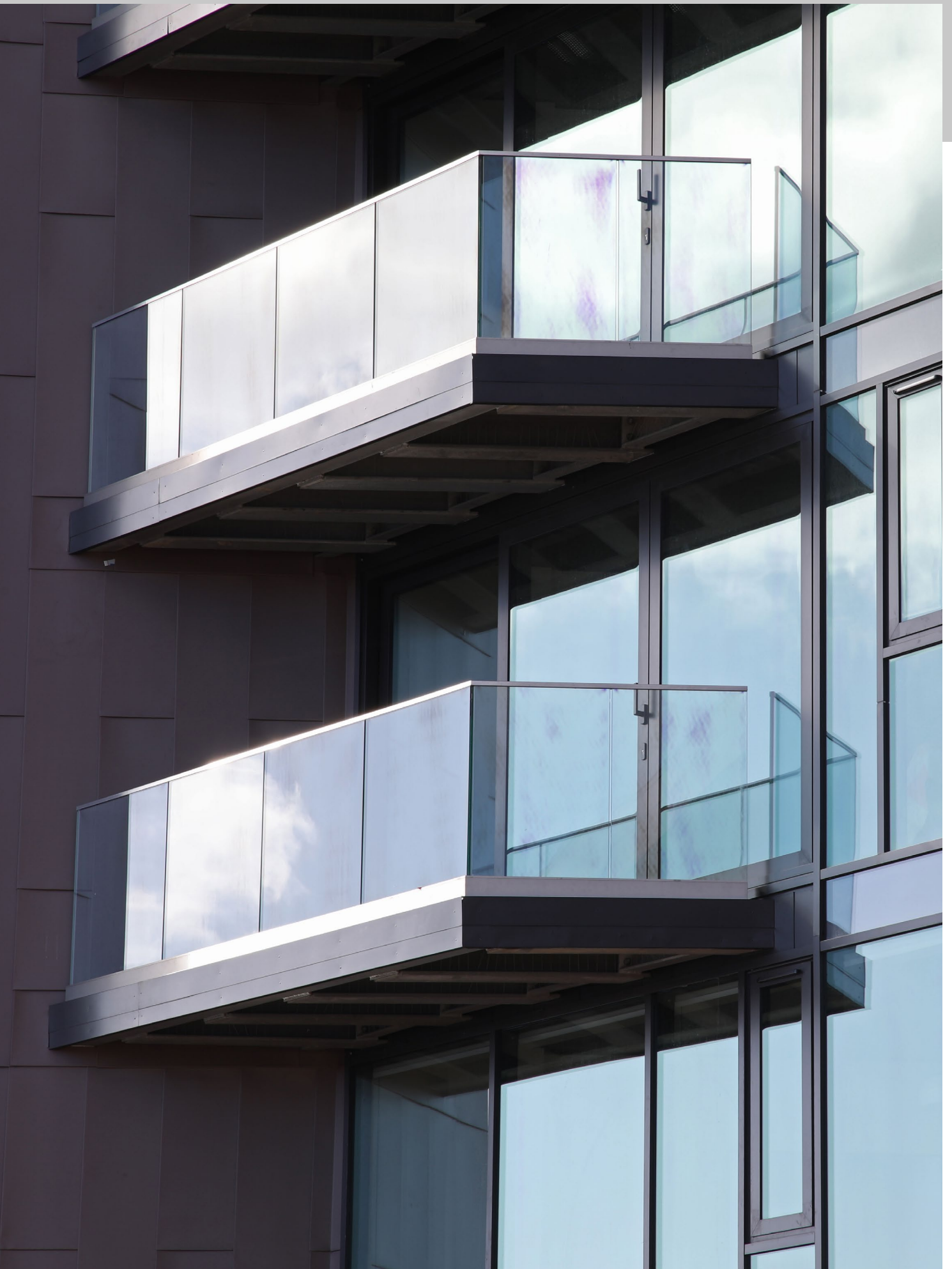
Compatible with
both double and
triple glazing

Thermally efficient,
with a high performance
polyamide thermal break

Ali
DOOR SYSTEMS

*Shown: Ali FOLD
door system*





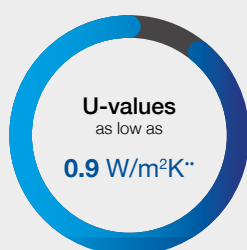
Ali doors key features

The Ali door suite offers a range of revolutionary folding and sliding doors with an innovative polyamide thermal break that gives impressive thermal efficiency.



Thermal performance

Impressive thermal performance and stylish looks, offering ultra-low U-values.



BREEAM®

Contributes to a positive BREEAM rating*

*dependent on specific product and configurations.

**based on Ali SLIDE double door 2000mm x 2180mm (+25%)



Technical

Available with a host of design options and configurations, providing expansive views and impressive thermal performance.

Testing: weather rating

BS6375-1, BS6375-2 and BS6375-3

Contact us to discuss your specific project requirements

Safety and security



Secured by Design



Official Police Security Initiative

Average U-values

Ali SLIDE sliding option:
Commercial CEN Standard

| | |
|--------------------|-----------|
| Double glazed unit | 1.3 W/m²K |
| Triple glazed unit | 0.9 W/m²K |

Flexible glazing sizes available



For further information about our range of Ali door suite options and to discuss your specific requirements, contact our technical sales managers or architectural advisers.

Ali doors options and sizing

Our innovative Ali range features sliding, folding, single and double swing doors available in an almost unlimited range of colours.

Ali FOLD Doors:

A stylish range of high-performance aluminium folding doors available in a wide choice of configurations and sizes, including a heavy-duty version allowing leaf sizes of 1300mm x 2400mm with a maximum leaf weight of 125kg. Capable of achieving U-values as low as 1.0 W/m²K when thermally enhanced.

The Ali FOLD doors can be specified in a range of styles including:

- Ali FOLD folding sliding
- Ali FOLD single swing
- Ali FOLD double swing
- Low threshold non rebate
- Heavy duty
- Floating mullion



Ali FOLD doors
Maximum door sizes

| | |
|---|--------|
| Max door leaf width: standard | 1000mm |
| Max door leaf height: standard | 2616mm |
| Max weight: standard <i>(per door leaf)</i> | 100kg |
| Max door leaf width: heavy duty | 1300mm |
| Max door leaf height: heavy duty | 2400mm |
| Max weight: heavy duty <i>(per door leaf)</i> | 125kg |



Ali doors options and sizing

Our Ali SLIDE door can achieve U-values as low as 0.9 W/m²K, dependent on options. Designed to fit all budgets, Ali SLIDE slimline doors have a 50mm interlock to give uninterrupted views and provide maximum daylight.

Ali SLIDE Doors:

The Ali SLIDE door range has a range of options including:

- Ali SLIDE
- Ali SLIDE slimline



*Ali SLIDE doors
Maximum door sizes*

| | |
|-----------------------------------|------------------|
| Max door leaf width | 2500mm |
| Max door leaf height | 2616mm |
| Max outerframe width | Project specific |
| Max outerframe height | 2700mm |
| Max weight <i>(per door leaf)</i> | 220kg |









SPW500/501 door:

SPW500/501 doors are a range of high performance thermally broken polyamide aluminium framing systems, ideal for high pedestrian uses and applications.

SPW500/501 door

SPW500/501 doors are ideal for providing a high-performance commercial door and framing solution. Both are capable of being manufactured in single and double doors. SPW500 utilises low thresholds while SPW501 features a wide clip and a plate flush glazed mullion section with a narrower 58mm clip and flush mullion providing additional design options. Both doors are available in a range of configurations.

Integrates seamlessly
with our SPW500
shopfront

Able to receive
glazing up to 28mm
thick depending
on weight

Featuring a high performance,
thermally broken polyamide
aluminium framing system



*Shown: SPW501
door system*

SPW500
DOOR SYSTEMS

SPW501
DOOR SYSTEMS

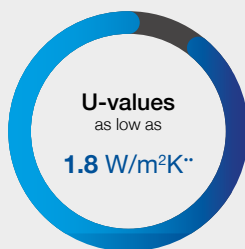
SPW500/501 door key features

A thermally broken range of commercial aluminium doors and framing systems for heavy pedestrian use and applications offering versatility, high performance and a robust solution.



Thermal performance

A range of thermally broken polyamide aluminium framing systems that both integrate seamlessly with our SPW500 shopfront.



BREEAM®

Contributes to a positive BREEAM rating*

*dependent on specific product and configurations.

**based on SPW500 double door 2000mm x 2180mm (+25%)



Technical

Designed to provide a high performance commercial door and framing solution capable of being manufactured in both single and double doors.

Testing: weather rating

BS6375-1, BS6375-2 and BS6375-3

Contact us to discuss your specific project requirements

Safety and security



Secured by Design



Official Police Security Initiative

Average U-values

SPW500 door option:
commercial CEN standard

Double glazed unit

1.8 W/m²K

Flexible glazing sizes available



up to 28mm

For further information about our SPW500/SPW501 Doors and to discuss your specific requirements, contact our technical sales managers or architectural advisers.

SPW500/501 door options and sizing

SPW500 and SPW501 can be specified in both single and double doors with a host of different configurations. SPW500 is available with a variety of options such as radius anti-finger trap stiles. SPW501 is also available with a range of options including standard pivot and anti-finger trap doors.

SPW501:

- SPW501 single leaf
- SPW501 double leaf
- SPW501 single action pivot
- SPW501 double action pivot



Shown: SPW501 door system

Typical door sizes

| | |
|----------------------|--------|
| Max door leaf width | 1150mm |
| Max door leaf height | 2400mm |

For guidance only. When exceeded please consult our technical department.

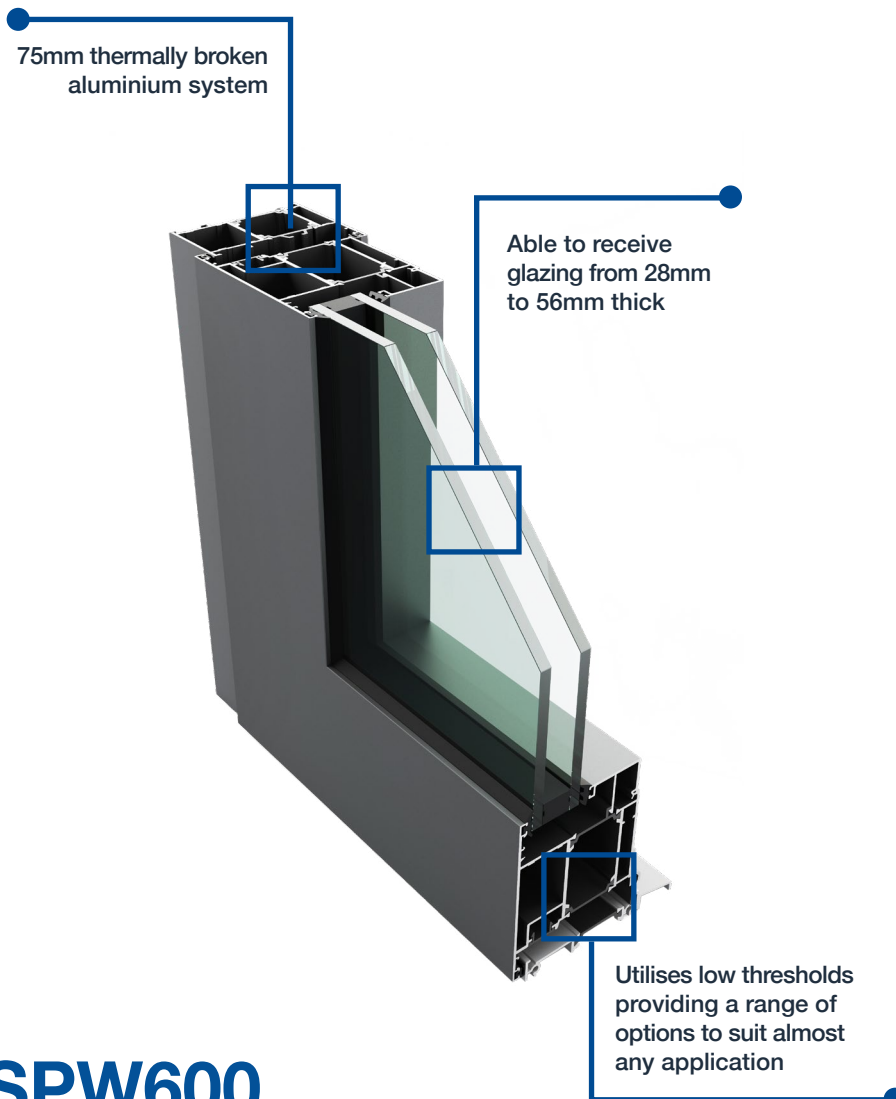
Also available in SPW501 with all the same options.

SPW600e:

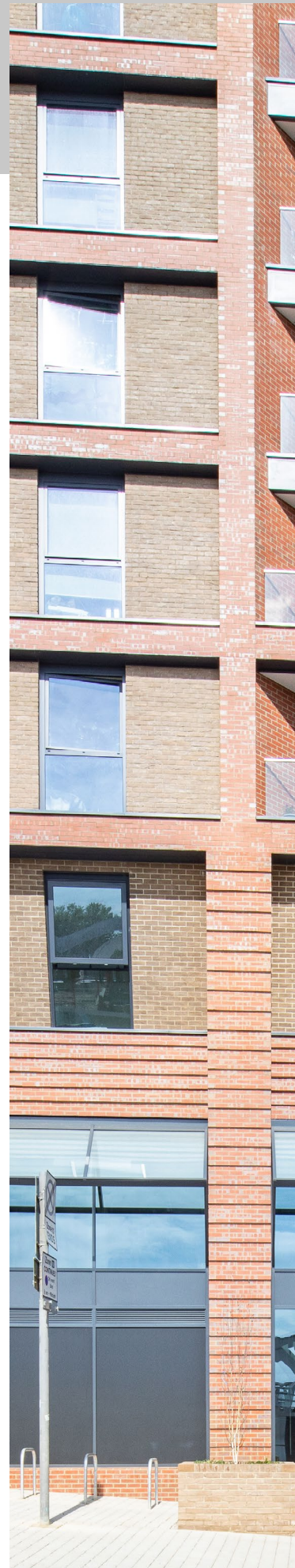
Innovatively designed utilising low thresholds providing enhanced thermal performance; Available in a range of options and applications.

SPW600e door suite

Our robust SPW600e door system is a thermally broken polyamide aluminium door that utilises low thresholds and is capable of being manufactured in a variety of options. Thanks to our in-house powder-coating facility, it can be specified in both single and dual colour choices.



SPW600
DOOR SYSTEMS





SPW600e key features

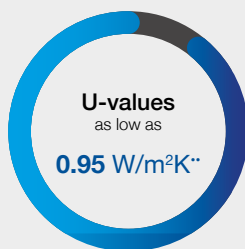
SPW600e is a 75mm thermally broken polyamide aluminium door system that utilises low thresholds providing a variety of styles to suit almost any

application. This system is available in both single and dual colour.



Thermal performance

Featuring a high-quality polyamide thermal barrier to offer low U-values and achieve BFRC ratings.



BREEAM®

Contributes to a positive BREEAM rating*

*dependent on specific product and configurations.

**based on SPW600e double door, 2000mm x 2180mm (+25%)



Technical

Fully weather and security tested, offering reliable performance and design flexibility.

Testing: weather rating

BS6375-1, BS6375-2 and BS6375-3

Contact us to discuss your specific project requirements

Safety and security



Average U-values

SPW600e door option:
commercial CEN standard

| | |
|--------------------|------------|
| Double glazed unit | 1.3 W/m²K |
| Triple glazed unit | 0.95 W/m²K |

Flexible glazing sizes available



Please contact us to discuss your specific requirements

SPW600e options and sizing

The SPW600e system can be specified in a range of options including, single, double, inward or outward opening. Utilising low thresholds, this robust thermally

enhanced system offers versatility to suit almost any application.



Typical door sizes

| | |
|-------------------------------------|--------|
| Max door leaf width | 1000mm |
| Max door leaf height | 2400mm |
| Max weight (<i>per door leaf</i>) | 75kg |





COMMERCIAL LOW-RISE SYSTEMS

**A flexible range of systems to create
secure and stylish building entrances.**



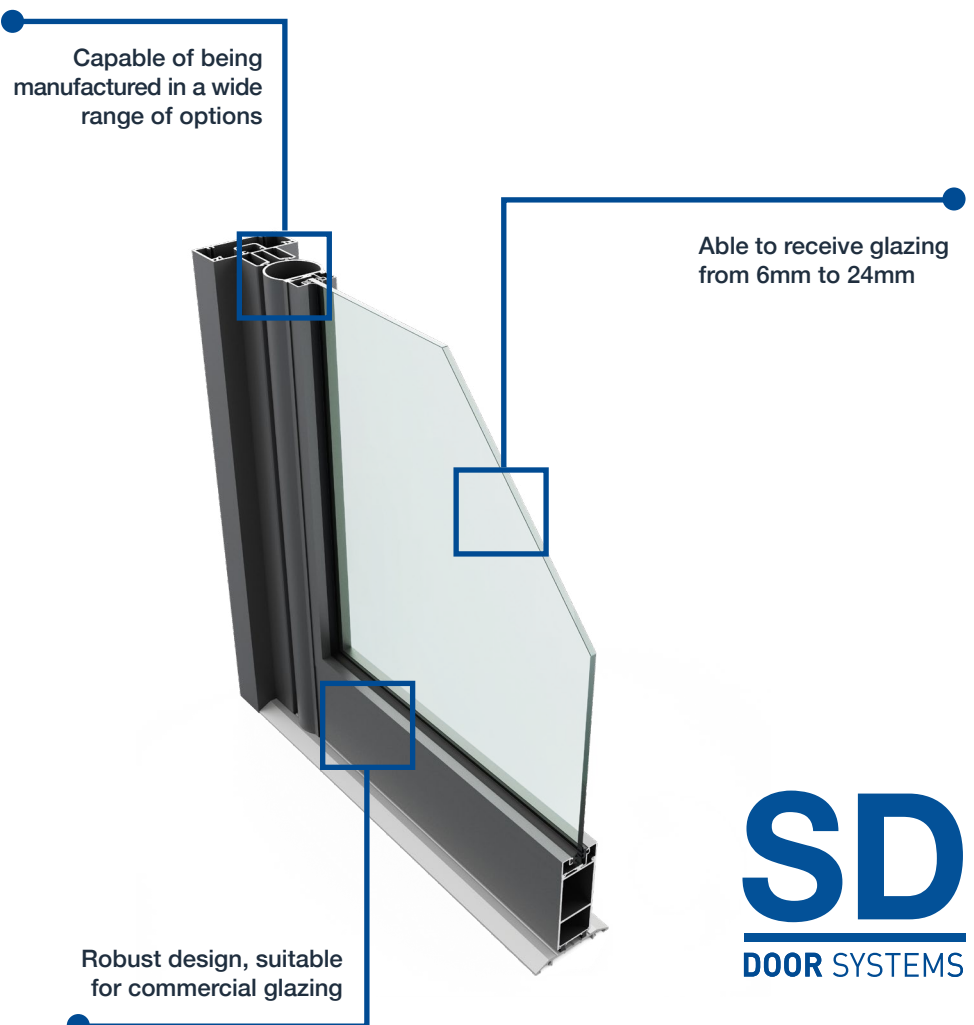


SD/SFG ground floor system:

Robust, ground floor aluminium treatment solution, extensively proven in a wide variety of applications.

SD/SFG ground floor system

The SFG shop front glazing system has been designed to provide a high-performance aluminium framing solution ideally suited for commercial shopfront glazing. SFG has been designed to integrate seamlessly with our SD door suite.




SD
DOOR SYSTEMS

SFG
SHOPFRONT

SD/SFG key features

The SD/SFG system is ideal for commercial applications due to its robust design. Capable of


being manufactured in a range of configurations and options to suit a variety of projects.



Thermal performance


Robust aluminium commercial doors for all high traffic applications. Proven over many years' usage.

Differing door configurations produce different U-value ratings. Please consult your technical sales manager or architectural advisor for further information.



Contributes to a positive BREEAM rating*

*dependent on specific product and configurations.



Technical

Designed to provide a robust commercial door solution capable of being manufactured in a range of configurations.

Testing: weather rating


BS6375-1, BS6375-2 and BS6375-3

Contact us to discuss your specific project requirements

Average U-values


Differing door configurations produce different ratings. Please consult your technical sales manager or architectural advisor for further information.

Safety and security



PAS 24


Secured by Design



Official Police Security Initiative

Multi-point locking hardware required

Flexible glazing sizes available



6mm 24mm

For further information about our SFG shopfront and to discuss your specific requirements, contact our technical sales managers or architectural advisers.



SD/SFG options and sizing

The SD/SFG ground floor system has been designed to provide a robust aluminium framing solution ideal for commercial shopfront glazing. SFG integrates seamlessly with our SD door suite and there are different door configurations available.

SD doors can be specified in a whole host of single and double door configurations including hinged open in/open out, standard leaf and action pivot. They can also be specified in sliding and sliding folding open in/open out. Available with multiple options such as radius, anti-finger trap styles.



Standard hook locks

| | |
|----------------------|--------|
| Max door leaf width | 1150mm |
| Max door leaf height | 2400mm |

Panic doors

| | |
|----------------------|--------|
| Max door leaf width | 1100mm |
| Max door leaf height | 2200mm |

For guidance only. When exceeded please consult our technical department.

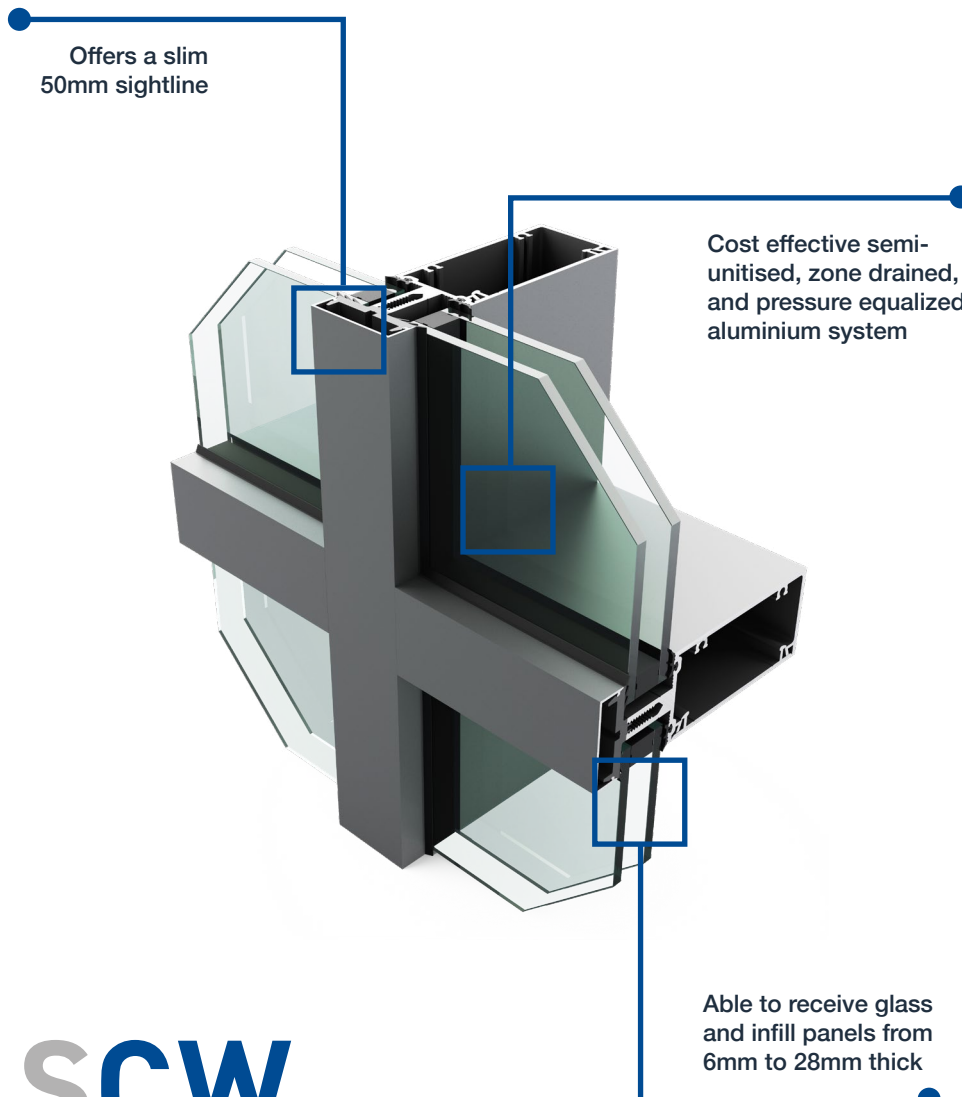


SCW/SCW+ curtain wall system:

SCW/SCW+ is a cost-effective, versatile, semi-unitised aluminium system designed for off site fabrication giving consistency of quality.

SCW/SCW+

The SCW curtain wall is a cost-effective semi-unitised, zone drained, and pressure equalized aluminium system. It offers slim sightlines with a range of options. The SCW+ curtain wall is a thermally enhanced version of SCW, with larger thermal barriers and high performance gaskets. Both systems have been innovatively designed to be fabricated into ladders for quick assembly on site.



SCW
CURTAIN WALL SYSTEMS





SCW/SCW+ curtain wall system

key features

A carefully designed, cost effective solution, offering slim sightlines and an innovative approach for quick

on site assembly. With a thermally enhanced option available providing improved performance.



Thermal performance

The SCW+ option provides a thermally enhanced alternative with larger thermal barriers and high performance gaskets.

Due to the variety of profiles, mullion spacings, glass and panel specifications on each project; a specific U-value calculation will be required. Please contact our technical department or architectural advisors.

BREEAM[®]

Contributes to a positive BREEAM rating*

*dependent on specific product and configurations.



Technical

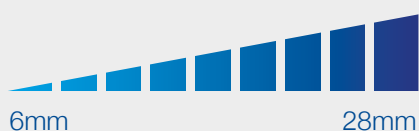
Project specific profiles can be incorporated giving flexibility of a façade design. SCW is also capable of spanning low to high, dependent on the manner of installation.

Testing: weather rating

SCW+: CWCT Sequence B, EN13830, SCW: BS6375-1

Differing door configurations produce different ratings. Please consult your technical sales manager or architectural advisor for further information.

Flexible glazing sizes available



Average U-values

Due to the variety of profiles, mullion spacings, glass and panel specifications on each project; a specific U-value calculation will be required. Please contact our technical sales managers or architectural advisors.

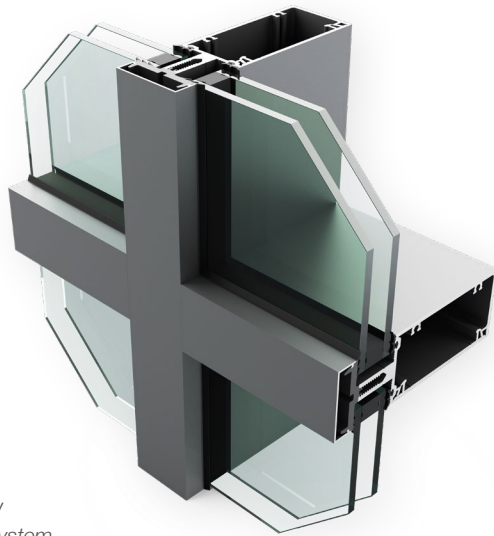
For further information about our SCW/SCW+ and to discuss your specific requirements, contact our technical sales managers or architectural advisors.



SCW/SCW+ curtain wall system options and sizing

Designed to meet current building regulations, both our SCW and SCW+ curtain wall systems are available with a choice of three mullion and

four transom depths. This system provides adaptability and different profiles can be incorporated depending on the specification of your project.



*Shown: SCW
curtain wall system*



CASE STUDIES

Our aluminium doors and commercial ground floor systems have been specified far and wide on projects across the UK.

Willowburn Retail Park, Alnwick

SPW500
DOOR SYSTEMS

Located within the historic market town of Alnwick, Willowburn Retail Park is a new shopping destination for a host of leading brands. The modern retail outlet features extensive glazed frontages created using the slimline SF52 aluminium curtain wall system

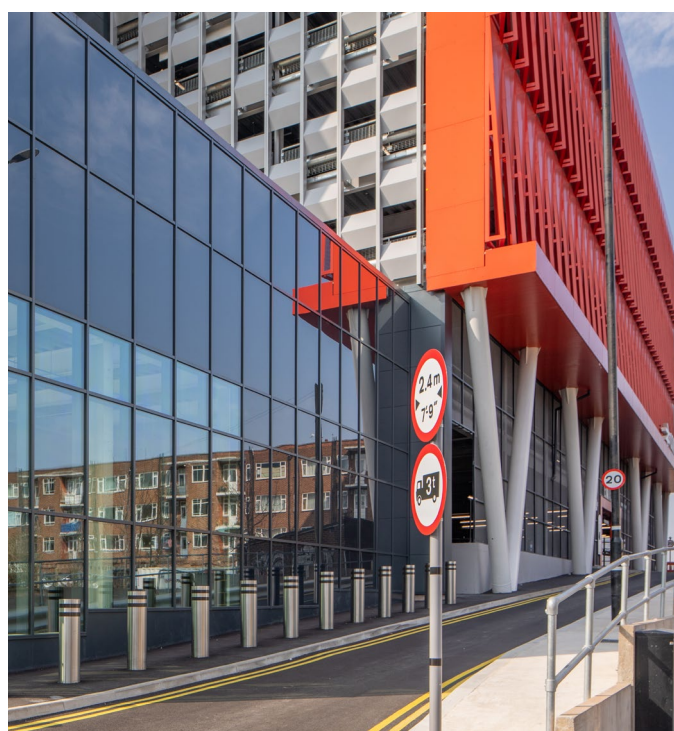
and durable SPW501 aluminium commercial doors. Certified to PAS24 and Secured by Design standards, the robust doors provide secure access throughout the development.



Coventry Railway Station, Coventry

The redeveloped railway station in Coventry features a new multi-storey car park as well as welcoming new passenger concourse which features retail spaces, waiting areas, toilet facilities and easier access to platforms. The extensive use

of SF52 aluminium curtain walling has created a light and airy space, with the robust SD aluminium commercial doors used throughout to provide high levels of security and safety.



The Nest, Norwich

SPW500
DOOR SYSTEMS

SD
DOOR SYSTEMS

Developed for Norwich City FC's Community Sports Foundation, The Nest is a new state-of-the-art sports centre which has been named after the club's former ground. A key part of the building's overall design is the strategic use of daylighting and the seamless

connection between the different areas which include football pitches, a gym, conferencing and event spaces and a cafe. To provide safe and secure access throughout, both SPW501 commercial doors and SD automatic sliding commercial doors have been used.



Waverley Arches, Edinburgh

SPW600
DOOR SYSTEMS

SD
DOOR SYSTEMS

After being confined to darkness for decades, the once abandoned Waverley Arches in Edinburgh are now home to an eclectic complex of shops, bars and restaurants. Each of the newly refurbished units

feature a suitably modern fenestration design, with robust SD commercial doors specified and powder-coated to a stylish black matt finish to complement the industrial heritage of the railway arches.



02

Door and commercial low-rise solutions



PROUD TO BE
UK OWNED

01709 772 600 | info@sasmail.co.uk
www.seniorarchitectural.co.uk

Senior Architectural Systems Ltd
Eland Road, Denaby Main
Doncaster, DN12 4HA

