



# SPW600e Door System Technical Datasheet

## Scope

The SPW600e door system has been designed to provide an enhanced performance door capable of being manufactured in single, double, inward or outward opening and utilising low thresholds producing a variety of options to suit most applications. It is a 75mm thermally broken polyamide door system achieving improved thermal performance. They can accept glazing up to 56mm thick.

## Materials

- Extruded aluminium is generally Aluminium Alloy 6060.T6/ T66, 6063.T6/T66, 6082.T6 to BS EN 755-9 and EN 12020-2.
- The Gasketry is generally manufactured in accordance with BS ISO 3302-1.
- The fixings are generally A2 Stainless Steel screws.

## Finishes

SPW600e door sections are available typically in three finishes.

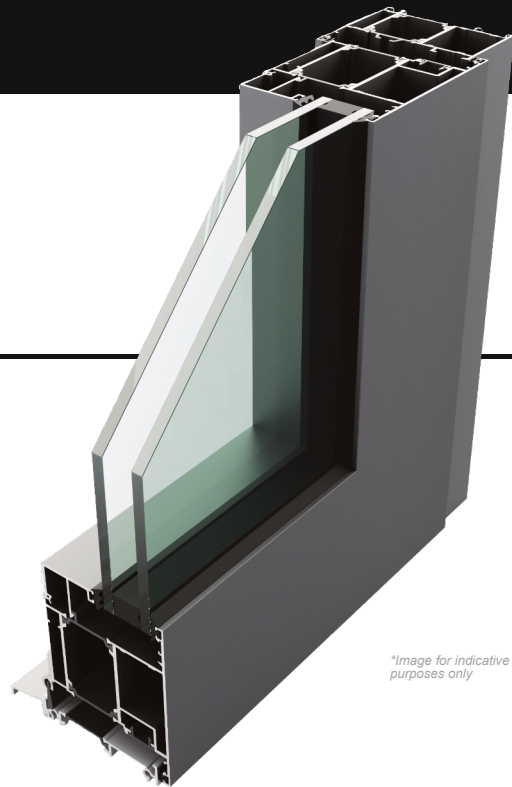
- Polyester Powder Coating to BS EN 12206-1 Part 1 painted in house. Surface finished to a minimum of 40 microns standard, or enhanced to suit project requirements, in accordance with ISO 9001, ISO 14001 and ISO 45001.
- Anodised finishes are to BS3897 to a minimum of 25 microns (AA25), supplied in either satin or polished finish in a limited range of colours.
- Mill Finish.

## Construction

SPW600e is constructed using mitred corners, joined with Crimped cleats; alignment chevrons assist in clean, accurate mitres. Integral transoms and mullions are scribed around the outer frames and fixed with either screw ports or shear blocks. A proprietary sealant is used on all metal joints in line with good practice.

## Environmental

Senior Architectural Systems is fully compliant with BS EN ISO 9001, BS EN ISO 14001, ISO 45001 and BES6001 standards. When used on projects involved in a BREEAM assessment, or within the Code for a Sustainable Built Environment, (which therefore involves the Green Guide specification) can offer significant benefits. For project specific assistance, please contact our specification team.



*\*Image for indicative purposes only*

### Typical Sizes

Max door leaf width	1000mm
Max door leaf height	2400mm
Max door leaf weight	75kg

### \*Average U-values

#### Single Doors

CEN standard (Double Glazed)	1.4 W/m <sup>2</sup> K
CEN standard (Triple Glazed)	1.0 W/m <sup>2</sup> K

#### Double Doors

CEN standard (Double Glazed)	1.3 W/m <sup>2</sup> K
CEN standard (Triple Glazed)	0.95 W/m <sup>2</sup> K

### Glazing

Thickness	28mm - 56mm
-----------	-------------

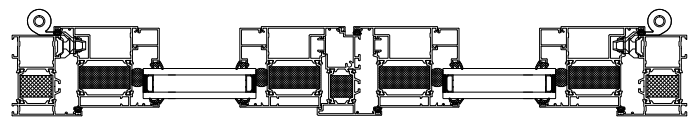
### Testing

Security	PAS24 & SBD
**BS6375 - 1	✓
BS6375 - 2	✓

*\*All calculations are based on CEN sized single doors 1230mm x 2180mm ±25% and double door 2000mm x 2180mm ±25%.*

*\*\*Results may vary based on specification. Further details are available upon request.*

*Test certifications available upon request.*



Secured by Design



Official Police Security Initiative



Senior Architectural Systems Ltd, Eland Road, Denaby Main, Doncaster, South Yorkshire, DN12 4HA.  
Tel: 01709 772 600 E-mail: [info@sasmail.co.uk](mailto:info@sasmail.co.uk) [www.seniorarchitectural.co.uk](http://www.seniorarchitectural.co.uk)

*Due to a policy of continual product development, Senior Architectural Systems reserves the right to alter any of the specifications given in this publication without prior notice. The specification for any given application must be checked with Senior Architectural Systems prior to manufacture. No responsibility for accuracy is accepted by Senior Architectural Systems. Always refer to the Technical Manual.*

