

SPW500 Thermally Broken Screening & Door System

Technical Datasheet

Scope

The SPW500 system is designed as a high usage commercial door and framing solution capable of being manufactured in double and emergency door types and utilising low thresholds and a variety of options such as radius anti-finger trap stiles. It is a thermally broken polyamide system, capable of accepting glazing up to 28mm thick.

Materials

- Extruded aluminium is generally Aluminium Alloy 6060.T6/ T66, 6063.T6/T66, 6082.T6 to BS EN 755-9 and EN 12020-2.
- Polyamide thermal barriers PA66 GF.25 and Senior Architectural Systems Polyurethane.
- The Gasketry is generally manufactured in accordance with BS ISO 3302-1.
- The fixings are generally A2 Stainless Steel screws.

Finishes

SPW500 framing sections are available typically in three finishes.

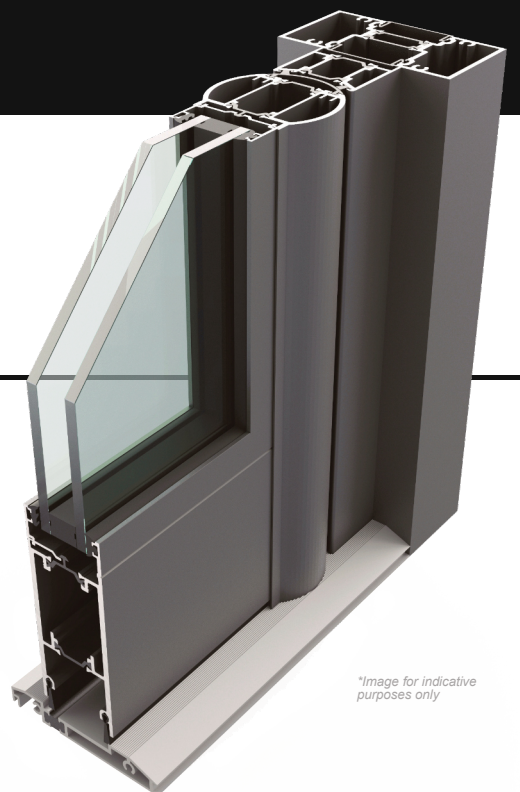
- Polyester Powder Coating to BS EN 12206-1 Part 1 painted in house. Surface finished to a minimum of 40 microns standard, or enhanced to suit project requirements, in accordance with ISO 9001, ISO 14001 and ISO 45001.
- Anodised finishes are to BS3897 to a minimum of 25 microns (AA25), supplied in either satin or polished finish in a limited range of colours.
- Mill Finish.

Construction

SPW500 is constructed with square cut components, mechanically jointed using self tapping screws into special cleats, and torsion bars are used for compressive strength. A proprietary sealant is used on all metal joints in line with good practice.

Environmental

Senior Architectural Systems is fully compliant with BS EN ISO 9001, BS EN ISO 14001, ISO 45001 and BES6001 standards. When used on projects involved in a BREEAM assessment, or within the Code for a Sustainable Built Environment, (which therefore involves the Green Guide specification) can offer significant benefits. For project specific assistance, please contact our specification team.



**Image for indicative purposes only*

Typical Sizes

Standard Hook Locks

Max door leaf width	1000mm (PAS24 Compliant) 1150mm (Not PAS24 Compliant)
Max door leaf height	2400mm

Panic Doors

Max door leaf width	1100mm
Max door leaf height	2200mm

*Average U-values

CEN standard (Double Glazed)	1.8 W/m ² K
------------------------------	------------------------

Glazing

Thickness	28mm
-----------	------

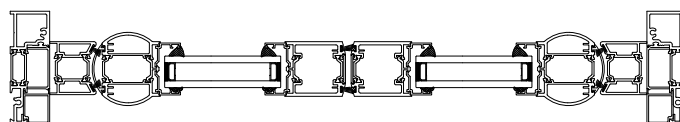
Testing

Security	PAS24 & SBD
**BS6375 -1	✓
BS6375 - 2	✓

*All calculations are based on CEN sized single doors 1230mm x 2180mm ±25% and double door 2000mm x 2180mm ±25%.

**Results may vary based on specification. Further details are available upon request.

Test certifications available upon request.



Secured by Design



Senior Architectural Systems Ltd, Eland Road, Denaby Main, Doncaster, South Yorkshire, DN12 4HA.
Tel: 01709 772 600 E-mail: info@sasmail.co.uk www.seniorarchitectural.co.uk

Due to a policy of continual product development, Senior Architectural Systems reserves the right to alter any of the specifications given in this publication without prior notice. The specification for any given application must be checked with Senior Architectural Systems prior to manufacture. No responsibility for accuracy is accepted by Senior Architectural Systems. Always refer to the Technical Manual.