



SF52 Sloped Curtain Wall System

Scope

The SF52 sloped curtain wall system has been designed to enhance thermal performance meaning the system can exceed current building regulations. It is a stick type front loaded system using spring pins and a specially designed step cut transom joint. Glazing ranges from 28mm to 52mm. Purlin (transom) size range (mm) - 50, 80, 100, 125, 150, 175, 200, 225, 250. Rafter (Mullion) size range (mm) - 72, 92, 117, 142, 167, 192, 217, 242. Specific profiles can be incorporated offering design flexibility.

Materials

- Extruded aluminium is generally Aluminium Alloy 6060.T6/T66, 6063.T6/T66, 6082.T6 to BS EN 755-9 and EN 12020-2.
- Thermal breaks are extruded to BS 7619.
- Gaskets are generally manufactured in accordance with BS 3734.

Finishes

SF52 sloped curtain wall sections are available typically in three finishes.

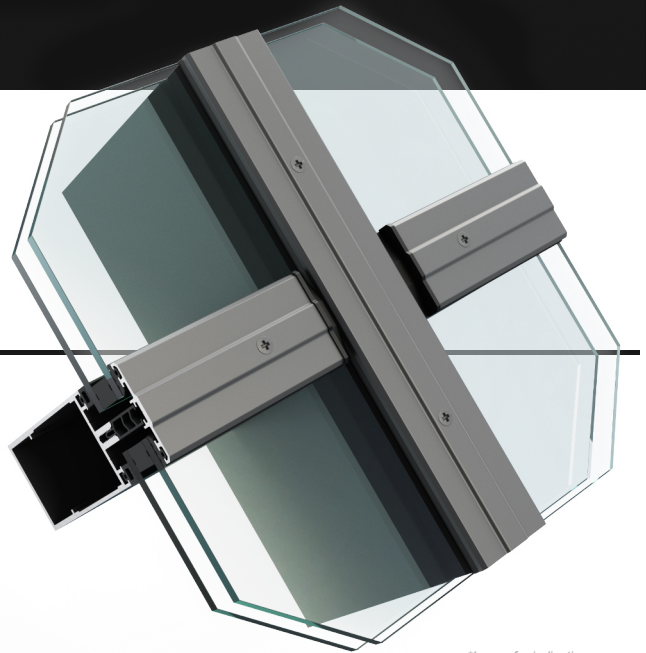
- Polyester Powder Coating to BS EN 12206-1 Part 1 painted in house. Surface finished to a minimum of 40 microns standard, or enhanced to suit project requirements, in accordance with ISO 9001, ISO 14001 and ISO 45001.
- Anodised finishes are to BS3897 to a minimum of 25 microns (AA25), supplied in either satin or polished finish in a limited range of colours.
- Mill Finish.

Construction

The sloped glazed system uses a 'lap' joint between the transoms and mullions. All internal gaskets are designed to mate with injection moulded corner pieces and are sealed at joints. Shear blocks and reinforcing sleeves are available.

Environmental

Senior Architectural Systems is fully compliant with BS EN ISO 9001, BS EN ISO 14001, ISO 45001 and BES6001 standards. When used on projects involved in a BREEAM assessment, or within the Code for a Sustainable Built Environment, (which therefore involves the Green Guide specification) can offer significant benefits. For project specific assistance, please contact our specification team.



*Image for indicative purposes only

*Average U-values

CEN standard (Double Glazed)	Due to the variety of profiles, mullion spacing, glass and panel specifications on each project; a specific U-value calculation will be required. Please contact your Technical Sales Manager or Architectural Advisor for more information.
CEN standard (Triple Glazed)	

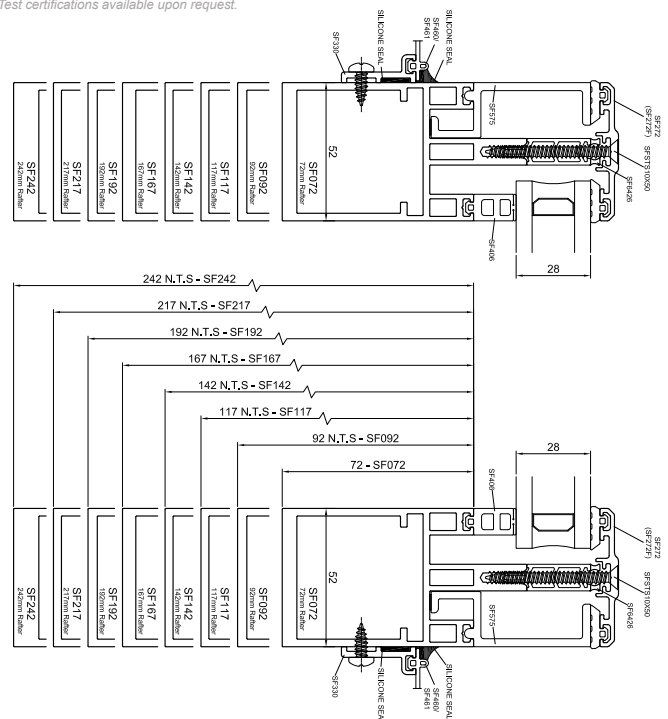
Glazing

Thickness	28mm - 52mm
-----------	-------------

Testing

CWCT Sequence B / EN13830	Air Permeability 600Pa
	Water Tightness 600Pa
	Wind Resistance 2400Pa

Test certifications available upon request.



Senior Architectural Systems Ltd, Eland Road, Denaby Main, Doncaster, South Yorkshire, DN12 4HA.
Tel: 01709 772 600 E-mail: info@sasmail.co.uk www.seniorarchitectural.co.uk

Due to a policy of continual product development, Senior Architectural Systems reserves the right to alter any of the specifications given in this publication without prior notice. The specification for any given application must be checked with Senior Architectural Systems prior to manufacture. No responsibility for accuracy is accepted by Senior Architectural Systems. Always refer to the Technical Manual.

