



PURe® Overswing Window System

Technical Datasheet

Scope

The PURe® Overswing window has been designed to meet current and future building regulations, with impressive thermal performance. PURe® is an evolved generation of aluminium window systems manufactured in the UK. It combines the long life and low maintenance of powder coated aluminium externally and internally with a patented high insulation PUR foam thermal barrier. PURe® Overswing windows are capable of accepting glazing up to 50mm thick.

Materials

- Extruded aluminium is generally Aluminium Alloy 6060.T6/ T66, 6063.T6/T66, 6082.T6 to BS EN 755-9 and EN 12020-2.
- Polyamide thermal barriers are manufactured in accordance with PA66 GF25.
- The Gasketry is generally manufactured in accordance with BS ISO 3302-1.
- The fixings are generally A2 Stainless Steel screws.

Finishes

PURe® Overswing window sections are available typically in two finishes.

- Polyester Powder Coating to BS EN 12206-1 Part 1 painted in house. Surface finish to a minimum of 40 microns standard, or enhanced to suit project requirements, in accordance with ISO 9001, ISO 14001 and ISO 45001.
- Anodised finishes are to BS3897 to a minimum of 25 microns (AA25), supplied in either satin or polished finish in a limited range of colours.

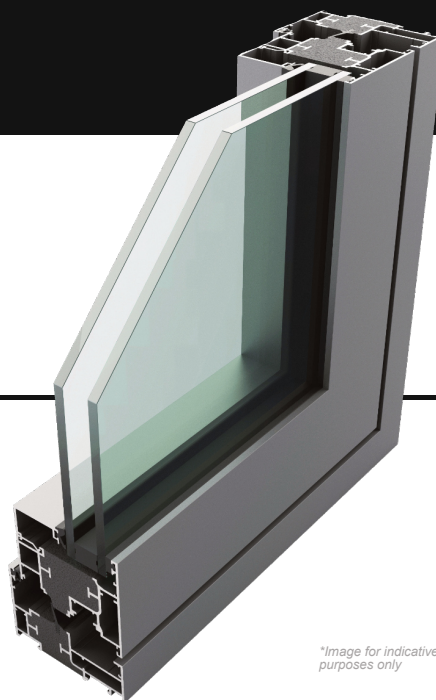
Construction

PURe® is constructed using mitred corners, joined with crimped cleats; alignment chevrons assist in clean, accurate mitres. Integral transoms and mullions are scribed around the outer frames and fixed with either screwports or shearblocks.

A proprietary sealant is used on all metal joints in line with good practice. Opening window frames are designed to be inserted directly into the outer frames using specialist reversible hinges.

Environmental

Senior Architectural Systems is fully compliant with BS EN ISO 9001, BS EN ISO 14001, ISO 45001 and BES6001 standards. When used on projects involved in a BREEAM assessment, or within the Code for a Sustainable Built Environment, (which therefore involves the Green Guide specification) can offer significant benefits. For project specific assistance, please contact our specification team.

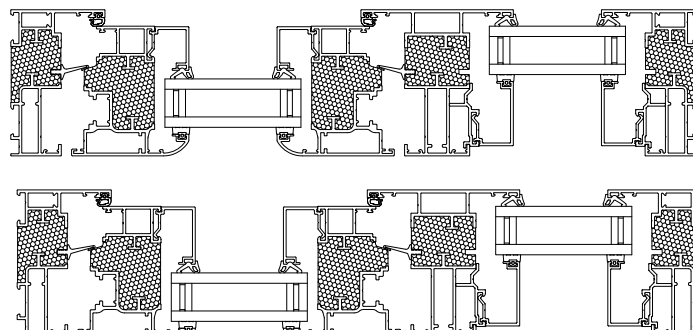


**Image for indicative purposes only*

Typical Sizes	Width (mm)	Height (mm)
Overswing	1500	1738
Overswing (489mm - 1588mm) Max Weight	80kg	
Overswing (1589mm - 1738mm) Max Weight	60kg	
*Average U-Values		
Residential CEN standard (Double Glazed)	1.4 W/m²K	
Residential CEN standard (Triple Glazed)	1.0 W/m²K	
Commercial CEN standard (Double Glazed)	1.3 W/m²K	
Commercial CEN standard (Triple Glazed)	0.94 W/m²K	
Glazing		
Radius Vent	28mm - 48mm	
Flat Faced Vent	28mm - 57mm	
Testing		
Security	PAS24 & SBD	
BS6375 - 1	Air Permeability 600Pa	
	Water Tightness 600Pa	
	Wind Resistance 2400Pa	
BS6375 - 2	✓	

**All calculations are based on CEN sized windows at 1230mm x 1480mm.*

Test certifications available upon request.



Secured by Design



Official Police Security Initiative



Senior Architectural Systems Ltd, Eland Road, Denaby Main, Doncaster, South Yorkshire, DN12 4HA.
Tel: 01709 772 600 E-mail: info@sasmail.co.uk www.seniorarchitectural.co.uk

Due to a policy of continual product development, Senior Architectural Systems reserves the right to alter any of the specifications given in this publication without prior notice. The specification for any given application must be checked with Senior Architectural Systems prior to manufacture. No responsibility for accuracy is accepted by Senior Architectural Systems. Always refer to the Technical Manual.

