

# Ali FOLD Folding Sliding Door System

## Technical Datasheet

### Scope

The Ali FOLD folding sliding door system has been designed to meet current and future building regulations, with impressive thermal performances. Ali FOLD is an evolved generation of aluminium door system manufactured in the UK. They combine the long life and low maintenance of powder coated aluminium with a polyamide high performance thermal barrier. Ali FOLD folding sliding doors are capable of accepting glazing up to 48mm thick and is also available with a floating mullion option.

### Materials

- Extruded aluminium is generally Aluminium Alloy 6060.T6/ T66, 6063.T6/T66, 6082.T6 to BS EN 755-9 and EN 12020-2.
- Polyamide thermal barriers are manufactured in accordance with PA66 GF25.
- The Gasketry is generally manufactured in accordance with BS ISO 3302-1.
- The fixings are generally A2 Stainless Steel screws.

### Finishes

Ali FOLD Folding Sliding door sections are available typically in three finishes.

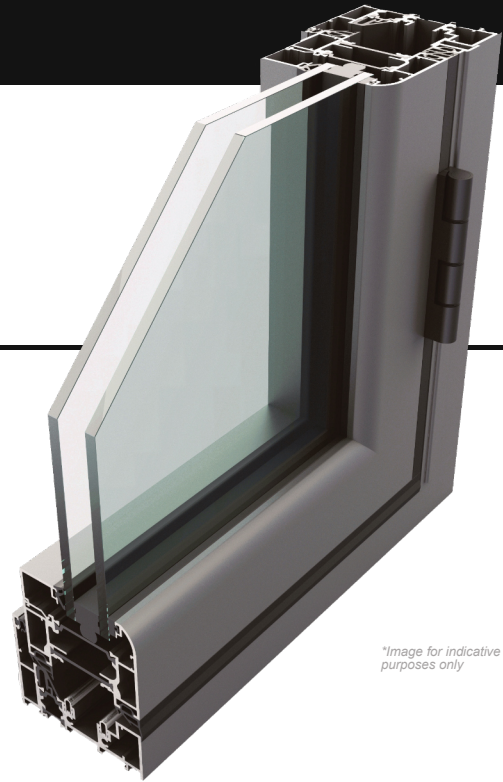
- Polyester Powder Coating to BS EN 12206-1 Part 1 painted in house. Surface finished to a minimum of 40 microns standard, or enhanced to suit project requirements, in accordance with ISO 9001, ISO 14001 and ISO 45001.
- Anodised finishes are to BS3897 to a minimum of 25 microns (AA25), supplied in either satin or polished finish in a limited range of colours.
- Mill Finish.

### Construction

Ali FOLD is constructed using mitred corners, joined with crimped or mechanical cleats; alignment chevrons assist in clean, accurate mitres. A proprietary sealant is used on all metal joints in line with good practice.

### Environmental

Senior Architectural Systems is fully compliant with BS EN ISO 9001, BS EN ISO 14001, ISO 45001 and BES6001 standards. When used on projects involved in a BREEAM assessment, or within the Code for a Sustainable Built Environment, (which therefore involves the Green Guide specification) can offer significant benefits. For project specific assistance, please contact our specification team.



*\*Image for indicative purposes only*

### Typical Sizes

#### Standard Duty

Max door leaf width	1000mm
Max door leaf height	2616mm
Max weight per door leaf	100kg

#### Heavy Duty

Max door leaf width	1300mm
Max door leaf height	2400mm
Max weight per door leaf	125kg

#### \*Average U-values

CEN standard (Double Glazed)	1.4 W/m <sup>2</sup> K
CEN standard (Triple Glazed)	1.0 W/m <sup>2</sup> K

#### Glazing

Thickness	24mm - 48mm
-----------	-------------

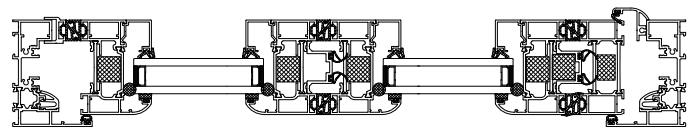
#### Testing

Security	PAS24 & SBD
**BS6375 -1	✓
BS6375 - 2	✓

*\*All calculations are based on CEN sized single doors 1230mm x 2180mm ±25% and double door 2000mm x 2180mm ±25%.*

*\*\* Results may vary based on specification. Further details are available upon request.*

*Test certifications available upon request.*



Secured by Design



Senior Architectural Systems Ltd, Eland Road, Denaby Main, Doncaster, South Yorkshire, DN12 4HA.  
Tel: 01709 772 600 E-mail: [info@sasmail.co.uk](mailto:info@sasmail.co.uk) [www.seniorarchitectural.co.uk](http://www.seniorarchitectural.co.uk)

*Due to a policy of continual product development, Senior Architectural Systems reserves the right to alter any of the specifications given in this publication without prior notice. The specification for any given application must be checked with Senior Architectural Systems prior to manufacture. No responsibility for accuracy is accepted by Senior Architectural Systems. Always refer to the Technical Manual.*