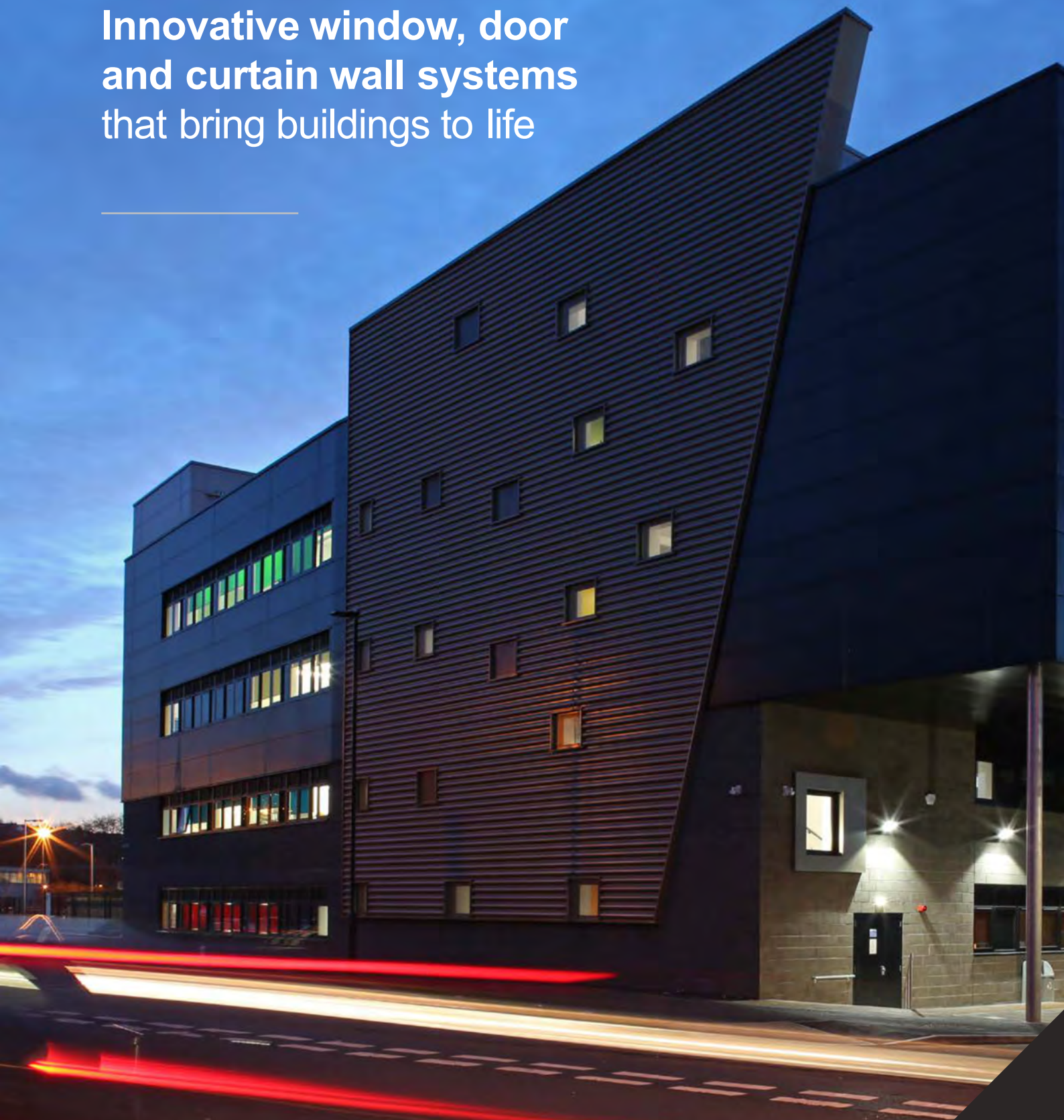



**Innovative window, door
and curtain wall systems
that bring buildings to life**



SENIOR ARCHITECTURAL SYSTEMS



From small beginnings, Senior has grown to become the largest privately owned fenestration systems company in the UK*

*Measured by turnover.

04 | Welcome to Senior

06 | Our history

10 | The Senior difference

14 | Products at a glance

16 | Projects

Welcome to Senior...

After more than thirty years in business we are known for the effectiveness of our approach.

As the largest privately owned fenestration systems house in the UK, we design, manufacture and supply innovative and high-performance aluminium windows, doors and curtain wall systems for use on projects across the sectors. With a strong focus on supply chain collaboration, we recognise the value of relationships and work closely with both our fabricators and clients to deliver fenestration solutions that perform as well as they look.

With a state-of-the-art manufacturing facility in South Yorkshire, which includes our own in-house powder coating paint line, we have additional distribution centres in Scotland and Wales and have worked on projects across the UK.

It is this combination of flexibility and stability that ensures we have the resources, infrastructure, facilities and staff to provide outstanding support, at the design stage, during construction and throughout the ongoing lifetime of the building.





STOURBRIDGE COLLEGE | BIRMINGHAM



Our History

For more than thirty years we have been successfully involved in many commercial projects, both new build and refurbishment.

We are well known for our unique down-to-earth cooperative approach. Fabricators, architects and contractors around the UK tell us that's why they choose to deal with Senior rather than anyone else.

Timeline

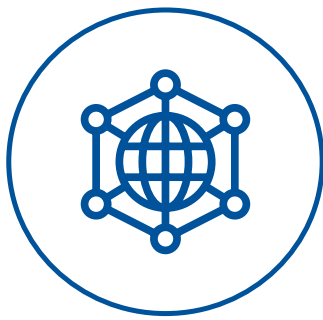
- 1991** Senior Aluminium Systems was founded by Lennart Jonsson and David Senior. Based in Bradford, our aim was to revolutionise the fenestration industry by putting customer service centre stage. To this day, our motto continues to be 'give customers what they want, when they want it'.
- 1994** Branches in both Scotland and Wales open, allowing us to provide a high quality service UK-wide.
- 1996** Our existing offering is enhanced through the acquisition of powder coating facilities.
- 2001** We relocate to larger premises in Denaby near Doncaster, gaining in-house, state-of-the-art powder coating and polyamide rolling facilities.
- 2007** Productivity is increased and quality improved through expansion into our purpose-built warehouse.
- 2008** The business grows to be more than just an aluminium systems company, prompting a rebrand to Senior Architectural Systems.

- 2009** We acquire a glass systems company in Scarborough, allowing all aspects of fenestration to be sourced from one place.
- 2014** As part of our commitment to reducing the environmental impact of our business, we invest in a number of sustainable initiatives including installing a biomass boiler to heat the warehouse.
- 2015** Our innovative range of PRe[®] aluminium windows is unveiled. In the same year, our high performance SF52 curtain wall system is also launched and becomes an instant success with fabricators.
- 2016** We are awarded a UK patent for our PRe[®] range which has expanded to include aluminium doors. We also invest in our production lines to help future-proof the business.
- 2017** Significant increases in capacity and production follow the installation of a new state-of-the-art polyamide rolling machine. Adding strength to our domestic offering, our Ali FOLD aluminium doors are complemented by the launch of the Ali VU slimline polyamide window. Senior also surpasses its £30 million target to become the largest independent fenestration company in the UK by turnover.
- 2022** Further product releases and investment programmes are planned to keep us at the cutting-edge of our industry.

The Senior difference

Not all fenestration systems companies are the same.

At Senior you'll find not just a different range of products, but a different way of doing business. It's a difference that our customers and their clients like.



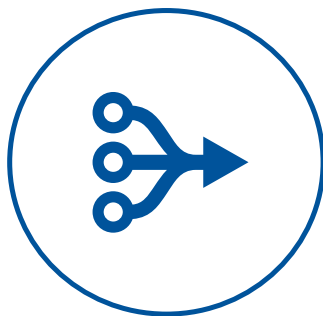
[INNOVATION]



[CUSTOMER FOCUSED]



[CUTTING-EDGE DESIGN]



[FORWARD THINKING]

The Senior difference



INNOVATION

- State-of-the-art powder coating lines enable us to paint 12,000 profiles per week on a single day shift.
- Our investment in the latest production technology, including a new polyamide rolling machine, has doubled our production capacity.
- We have the UK's only PURE[®] production line, with a capacity to produce 1,000 profiles per week.



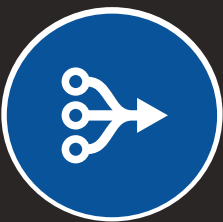
CUSTOMER FOCUSED

- We have established a strong reputation for providing reliable and responsive customer service.
- Our lead times are competitive. We can facilitate a seven-day turnaround for painted products whereas most other companies work to lead times of around 20 days.
- Unlike our competitors that can only offer one delivery per week, our established delivery network enables us to provide twice-weekly customer deliveries.
- Our fleet of flatbeds allow for a responsive and flexible service so we are well placed to cater for the high demands of a domestic market.
- We have multi-site operations so we can quickly respond to our customers' needs.



CUTTING-EDGE DESIGN

- Our multi-disciplined design team is experienced in designing products specifically for the UK market.
- We offer a full suite of commercial and domestic products.
- Our patented technology and innovative product solutions offer class beating performance.

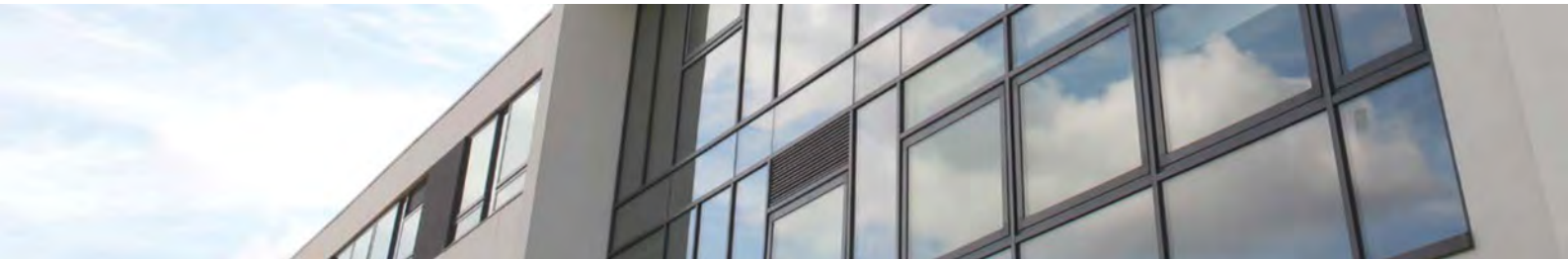


FORWARD THINKING

- A comprehensive programme of inward investment ensures we have the latest technology and infrastructure.
- We have increased our delivery capacity with a modern fleet of Euro 6 engine HGVs.
- We have numerous environmental and Health and Safety accreditations, with the pending inclusion of BES6001.
- As part of our long-term commitment to addressing the skills shortage and the development of our industry, we are due to open our in-house training academy in 2018.

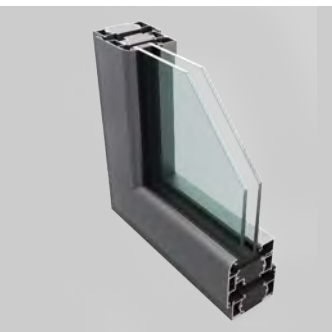


Products at a glance



PUR^e® Windows and Doors

A revolutionary range of aluminium windows and doors with an expanded polyurethane thermal barrier giving exceptional thermal performance.



PUR^e® Window Systems

A revolutionary range of aluminium windows which uses an innovative, enhanced thermal barrier manufactured from expanded polyurethane (PUR) allowing ultra-low U-values to be achieved.



PUR^e® Door Systems

A revolutionary range of aluminium doors with a host of options including folding sliding, inline slide, lift and slide, single, double and commercial doors. Designed with an expanded polyurethane thermal barrier, giving exceptional thermal performance and ultra-low U-values.



Ali VU Window Systems

Super slimline aluminium window with a polyamide thermal break giving impressive thermal efficiency. Available in host of design options.



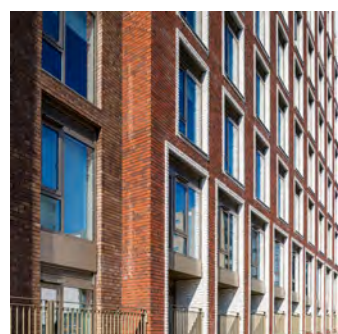
Ali Door Systems

A stylish range of aluminium doors with a variety of options including folding sliding, single and double. With a wide choice of configurations and impressive thermal efficiency, they are ideal for both domestic and commercial use.



SPW300 Window Systems

A thermally broken polyamide aluminium window system with slim sightlines and a wide variety of styles.



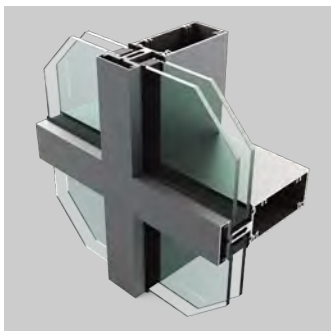
SPW600 Window Systems

SPW600 is a three chamber, 75mm polyamide thermally broken aluminium window system offering versatility and is available in various configurations.



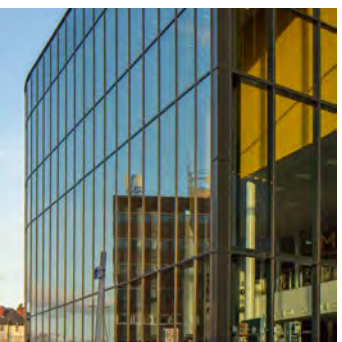
SPW500/501 Doors

SPW500 is a thermally broken commercial door and framing system designed for high pedestrian uses and applications. SPW501 is designed with a clip and flush mullion section offering greater design options and choices.



SCW

High performance, semi-unitised aluminium system, ideal for atrium roof areas where larger pane sizes are required.



SF52

SF52 is our most flexible curtain wall system with a host of aesthetic options, slim sightlines for visual consistency and enhanced thermal performance.



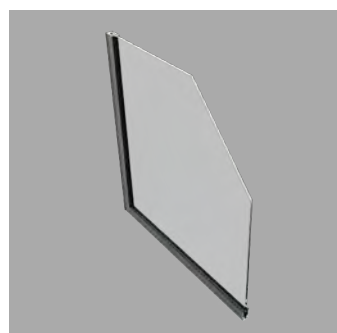
SF62

SF62 is very similar in design to our popular SF52 system, but has a wider 62mm box which is ideal for ultra high rise projects and those where structural movement is a challenge on the project.



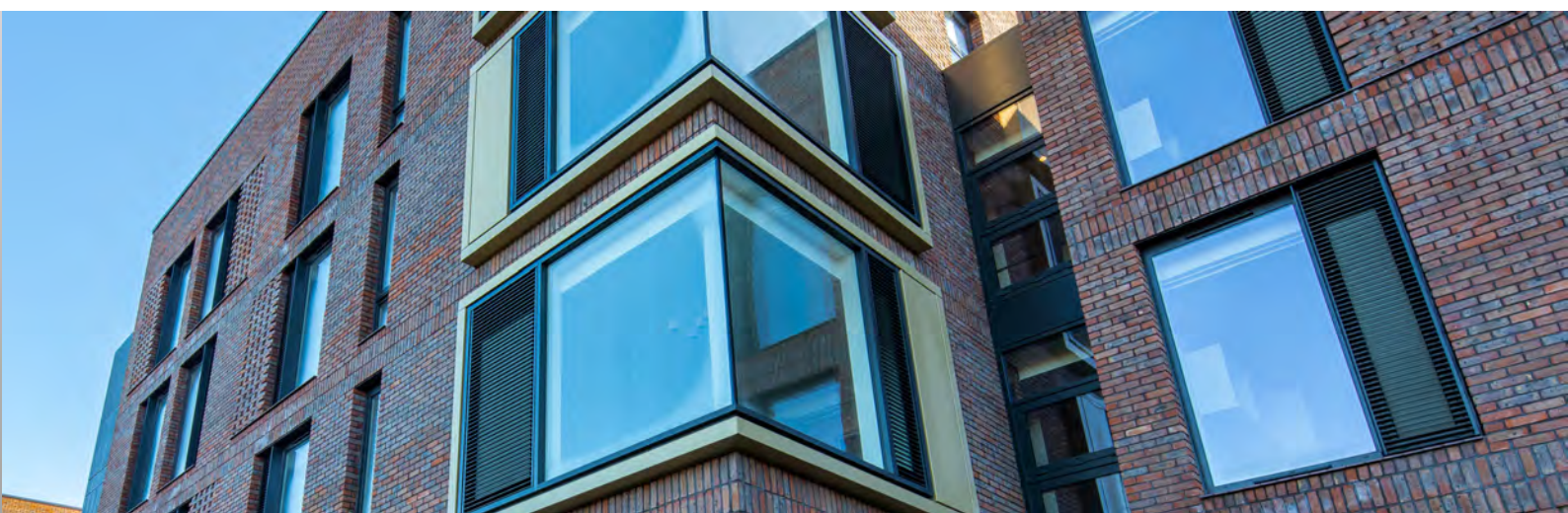
SFG

The SFG shop front glazing system is a robust, ground floor aluminium treatment solution, designed to provide a high performance aluminium framing solution ideally suited for commercial shopfront glazing. Extensively proven in a wide variety of applications.



SSG

A secondary aluminium glazing system designed for both improved thermal and acoustic performance.



Louvre Guard

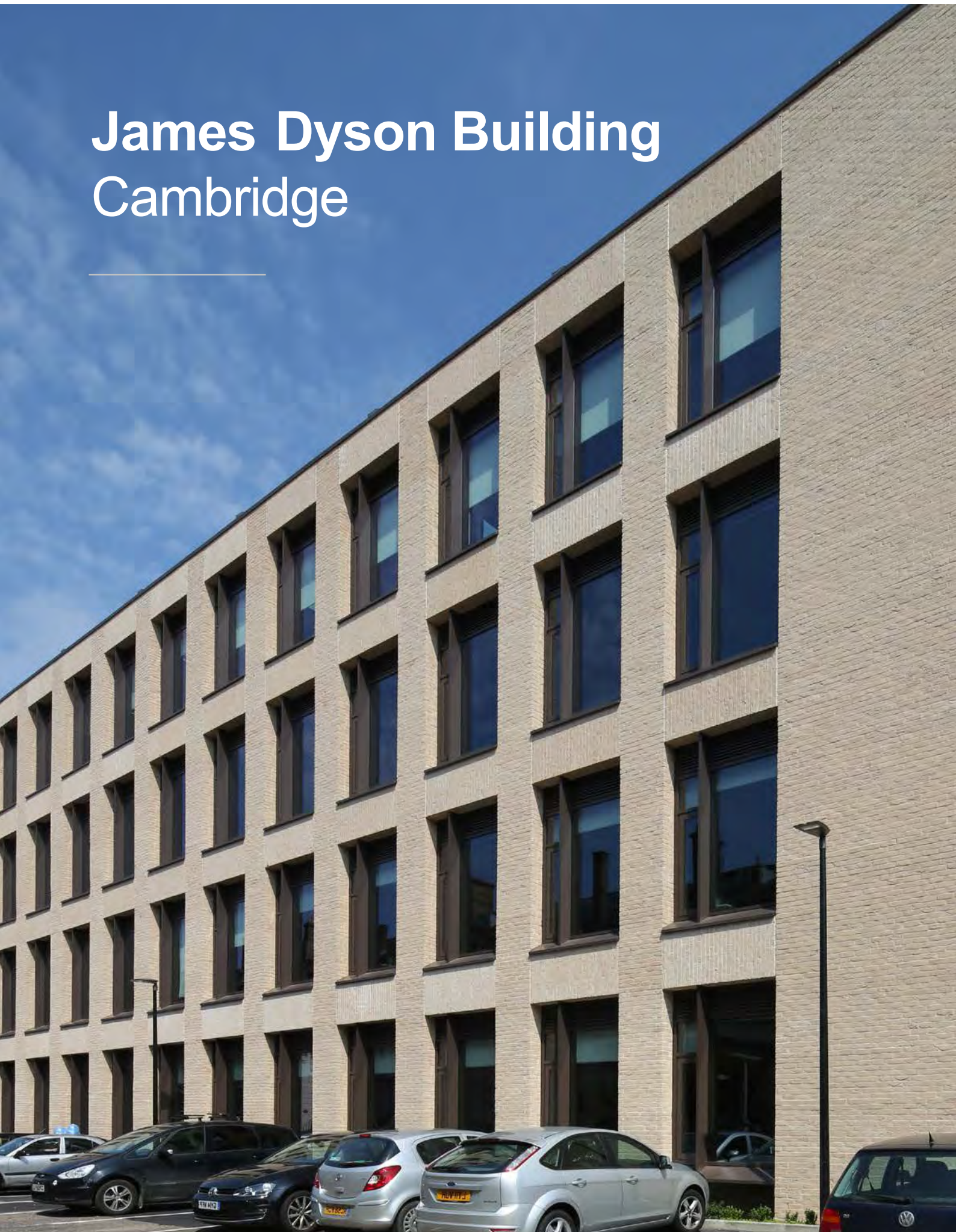
The Louvre Guard system is a stylish aluminium louvre which can be used with our inward opening SPW300, SPW600 and PURE® window systems. It is ideal for high-rise buildings where excellent ventilation is needed, whilst keeping occupants safe from the risk of falling from a window.

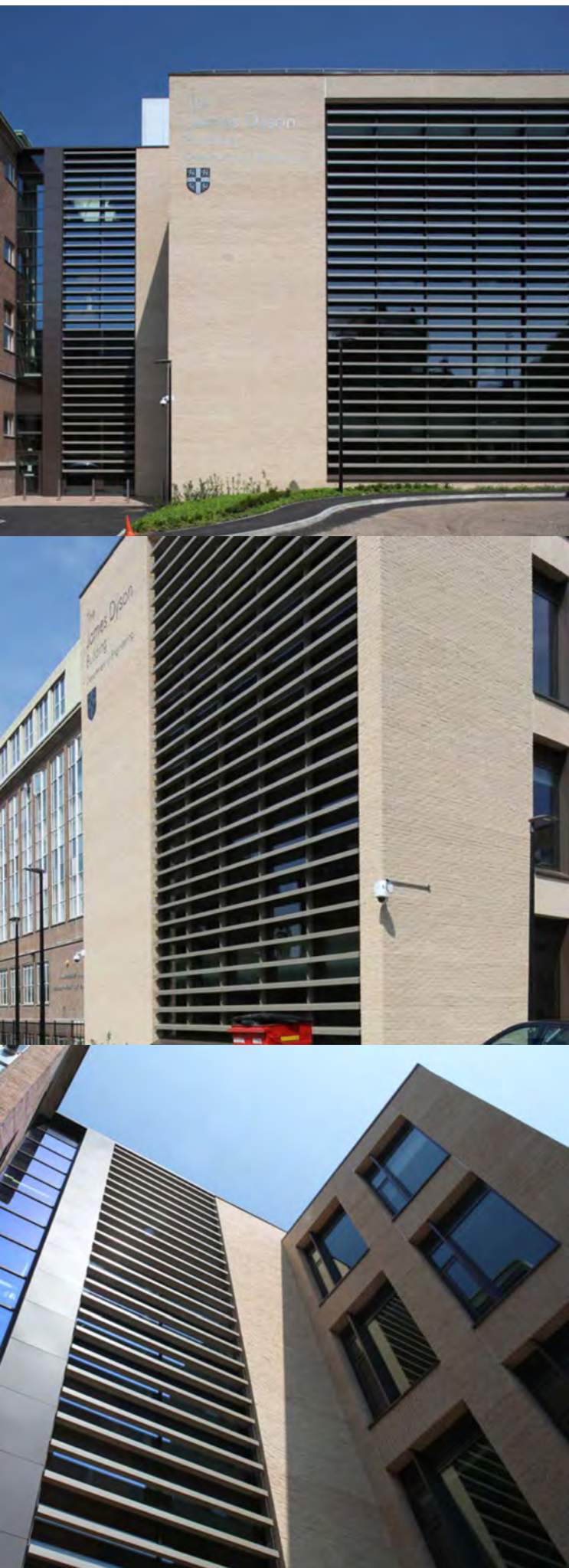


Projects

**Senior's aluminium systems
have transformed projects both
large and small throughout the UK.**

James Dyson Building Cambridge





Products

SF52 Curtain Wall

Funded by an £8 million donation from British inventor, designer and engineer James Dyson, this new hub for innovation and invention at the University of Cambridge's Department of Engineering was designed by Nicholas Hare Architects.

The new James Dyson building is now home to some of the brightest engineering minds in the country undertaking post graduate research. The design reflects the ground-breaking research performed within the building and boasts several energy efficient features to provide a low-carbon footprint.

A key part of the building envelope is Senior's SF52 curtain wall system. The individual SF52 units were fabricated by Glass & General Ltd. at their fully equipped high-tech factory in Dagenham, and then craned into place fully glazed to reduce on-site time. This enabled main contractor Morgan Sindall (with whom Senior has an established trading agreement) to meet the tight completion deadlines.

The system's slim 52mm sight lines provided the perfect solution to creating an attractive uniform appearance for the new building as well as maximising the flow of natural light into the largely open plan interiors. The robust construction of the SF52 curtain wall system and its exceptional thermal performance was also key to its specification and meeting the requirements of reducing the building's overall energy and life cycle costs.

Moss Heights Glasgow





Products

SPW600 Windows
SPW500 Doors
SF52 Curtain Wall

A range of glazing solutions from Senior Architectural Systems has been selected as part of the extensive refurbishment of three 10-storey residential tower blocks in Glasgow.

Main contractor ISG Plc was tasked with improving the thermal efficiency and aesthetic appeal of the Moss Heights development, which dates back from 1958 and was the very first high-rise residential scheme to be built in the city.

Working alongside architects Holmes Miller, specialist contractor Nortek Aluminium installed the fenestration package which included Senior's SF52 curtain walling system, SPW600 aluminium windows and SPW500 aluminium doors.

Senior's high performance aluminium curtain walling has been used to great effect and has been installed across the open balcony areas to provide residents with two new sun rooms and additional weatherproof space.

College of Engineering Sheffield





Products

SPW600 Windows
SPW500 Doors
SF52 Curtain Wall



The new Centre for Technology, Engineering and Design at The Sheffield College has benefited from a range of glazing solutions from Senior Architectural Systems.

Designed by Race Cottam Associates, the new £6.8m state-of-the-art Olive Grove Campus features a new build four-storey teaching block that is linked via an attractive glazed atrium to part of the former campus that houses practical workshop space. As well as providing a bright and airy breakout space for students, the two-storey atrium also provides views into the workshops which have also been refurbished as part of the ambitious redevelopment programme by main contractor Clugston Construction.

Senior's SF52 curtain walling, SPW600 windows and SPW500 doors were fabricated and installed by Alusec UK Limited, helping to create the modern and light interior and contribute towards the building's BREEAM rating of 'very good'. Owing to the tight site footprint and the challenges arising from the workshops and existing campus building remaining operational throughout the construction programme, supply chain collaboration was vital with Senior and Alusec working together to meet key delivery and installation dates and ensure the timely completion of works.



Cinema Complex Doncaster





Products

SPW501 Doors
SF52 Curtain Wall

The new six-screen Savoy cinema and restaurant complex in Doncaster is the latest major project in the Urban Centre Masterplan to help regenerate the town centre and make it a highly attractive place to live, visit, work.

Located in the Nigel Gresley Square in the Cultural and Civic Quarter, it stands in good company, being next door to Cast, Doncaster's new performing arts theatre, and a stone's throw away from the fabulous new Danum Gallery, Library and Museum.

The eye-catching design for the new £8.5 million project, by architects at Harris Partnership, reflects the modern theme of the surrounding buildings.

Extensively featuring Senior's slimline, thermally efficient SF52 aluminium curtain walling, the cinema's head-turning façade floods the foyer with light during the day, and looks even more spectacular when lit up at night. To cope with the expected heavy footfall, Senior's robust SPW501 commercial aluminium doors were installed at the main entrance and are perfect for high traffic areas. The use of SF52 aluminium curtain walling extends to the 5 restaurants in the complex providing high visibility of the interior spaces to entice customers inside.

Sainsbury's Eco Superstore Sheffield





Products

SF52 Curtain Wall

Sainsbury's latest Superstore in Wadsley Bridge, Sheffield was designed, specified and built with sustainability and the environment in mind.

The new Sainsbury's Eco store designed by Sheffield architects Hadfield Cawkwell Davidson, was built by main contractors Barr Construction (now McLaughlin & Harvey) and is the retail giant's first store to feature a steel and timber construction. A steel frame from the ground up to the sales floor and a timber frame to the ceiling with timber cassettes completing the roof helped to speed up the construction as well as reduce the carbon footprint of the store.

Equally important was the thermal efficiency of the fenestration. Senior's innovative new thermally-efficient SF52 structural silicone glazed curtain walling system was chosen for the main entrance elevation.

Available fully capped, capless or a combination of the two, and with an almost unlimited range of colours and finishes both inside and out, the SF52 curtain wall offered plenty of design flexibility.

The result is a dramatic façade that is easily recognisable from the main road and which creates a welcoming sense of light and space.

The Grand Pier Weston-super-Mare





Products

SPW600e Doors
SD Doors
SFG Shop Front
SPW300 Vent Inserts

Following the devastating fire of the historic Weston-super-Mare Grand Pier in July 2008, a futuristic new pier pavilion was designed by Bristol-based architects Angus Meek. The concept was chosen from six designs, shortlisted by the owners of the pier.

To realise the ambitious plans for a cutting-edge new pier, Senior Architectural Systems was the obvious choice for the high performance fenestration solution required.

The architecturally striking envelope features a host of state-of-the-art glazing solutions, including aluminium curtain wall and advanced thermally efficient windows and doors, all anodised in a marine quality silver finish to ensure maximum protection against the harsh elements of a British winter in the Bristol Channel.

Arts University Bournemouth





Products

SPW600 Windows

Louvre Guard Windows

PURe® SLIDE Doors

PURe® Commercial Door

SPW600e Doors

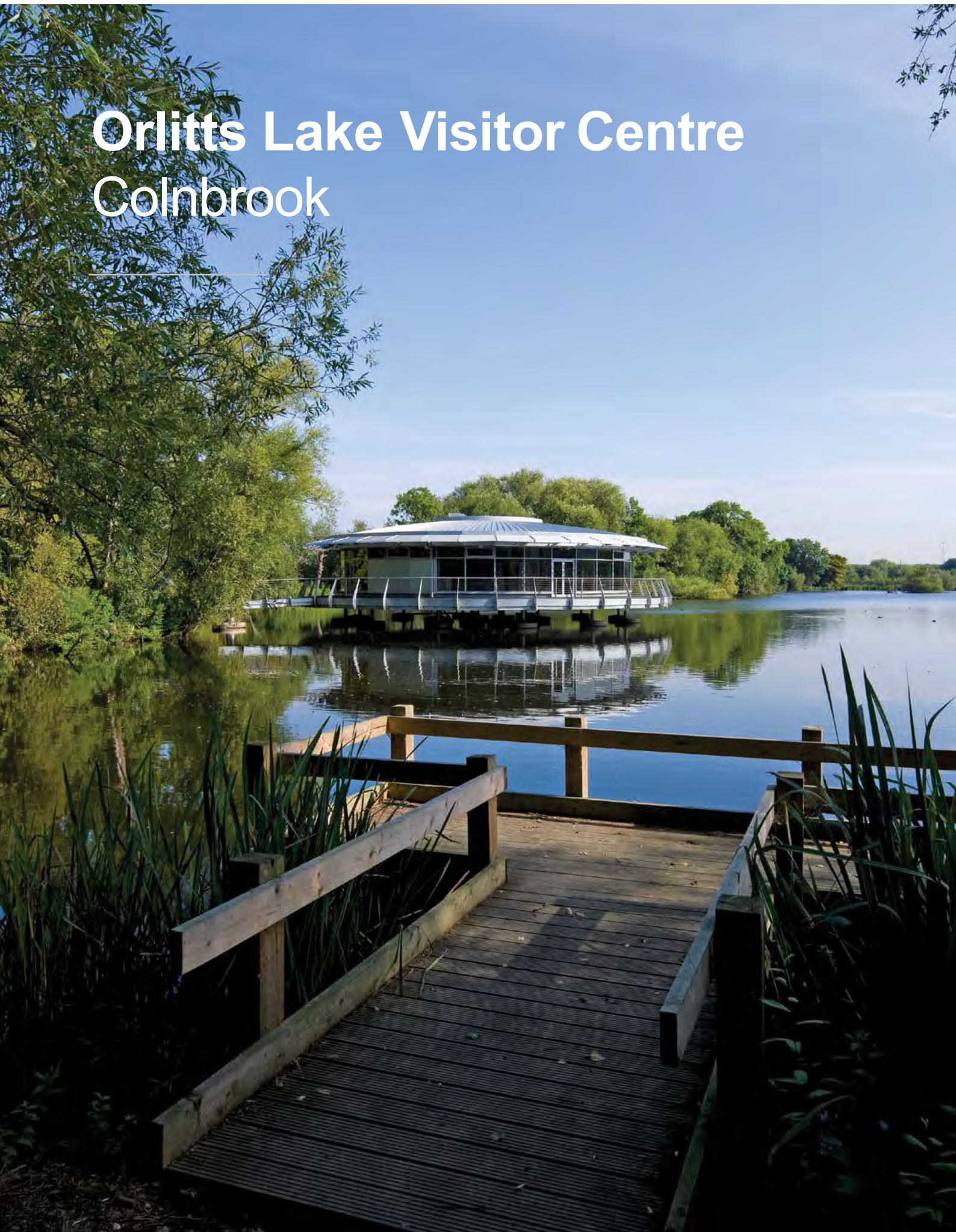
SPW501 Doors

SF52 Curtain Wall

Sustainability and design were the major focus for this new £24 student accommodation project which achieved a 'Very Good' BREEAM rating. Senior's highly thermally efficient glazing package was chosen to meet the scheme's sustainability criteria and budget. This included thermally enhanced SPW600 windows fitted with a Louvre Guard System in bedrooms and kitchens and with smoke vents in corridors for additional safety and security.

With their innovative thermal break offering exceptional thermal efficiency, PURe® Commercial Doors were installed at the security office whilst PURe® SLIDE Lift & Slide doors were specified for the large communal area.

Orlitts Lake Visitor Centre Colnbrook





Products

SPW300 Windows
SCW curtain wall

Orlitts Lake Visitor Centre is an educational facility and provides the opportunity to observe the enormous variety of wildlife that inhabits the lake. Faceted SCW curtain wall forms the main structure, complete with glazed areas and insulating panels. Ventilation is through top hung SPW300 casement windows fitted into the curtain wall system.

Danum Gallery, Library & Museum

Doncaster





Products

SPW501 Windows
SF52 Curtain Wall



Designed by Bond Bryan architects, the Danum Gallery, Library and Museum is a bold and ambitious restoration of four existing buildings to form a single cultural hub. The focal point is the restored frontage of a former Victorian school encased by Senior's SF52 aluminium curtain wall to form a stunning façade showcasing the exhibit, which looks even more dramatic when lit up at night. SF52 curtain walling was chosen for its slim sightlines, which allow extensive views of the building's restored period features and its enhanced thermal performance which helps improve overall energy efficiency.



Sovereign Street Leeds





Products

SPW300 Windows
SPW500 Doors
SF52 Curtain Wall

The new Concordia Works scheme on Sovereign Street in the heart of Leeds, West Yorkshire, has been created through the innovative refurbishment of an old 5-storey yarn and cord warehouse dating back to the early twentieth century. Designed by architects Gpad London, the building combines an attractive mix of original features and modern elements to create a high-specification office space that is ideally situated close to the city's transport links.

Owing to the scheme's prominent city centre location, the exterior of the building has been given a stylish and sympathetic makeover with Senior's dark coloured slim framed SPW 300 aluminium windows and SF52 aluminium curtain walling paying homage to the former warehouse's industrial heritage.

Senior's thermally efficient SF52 curtain walling has been used to create the feature glazed arches to the entrance level, with the design continuing with the window arches that have been installed to the floors above. Completing the fenestration package are Senior's SPW 500 doors which are ideally suited for use in high-traffic commercial applications.

The Concordia Works scheme was delivered by main contractor Firecrest Construction for client Boulton Brooks Real Estate.

Reading Girls School

Reading





Products

PURe® Windows
SF52 Curtain Wall



Two of Senior Architectural Systems' most innovative and thermally efficient glazing solutions have been specified for a new high school in Reading, helping to maximise the sense of light and space whilst reducing the environmental impact of the building.

Designed by Maber Architects and delivered by Interserve Kajima Joint Venture, Reading Girls' School is part of a wider scheme to create seven new secondary schools across Hertfordshire, Luton and Reading.

The new Reading Girls' School in Berkshire features Senior's patented low U-value PURe® aluminium casement windows throughout the two three-storey high teaching blocks, with the company's thermally enhanced SF52 curtain walling used to create the school's main entrance area and atrium. The installer on the contract was Elite Aluminium Systems Ltd.



The attractive slim profiles of both the PURe® windows and SF52 curtain walling help flood the interior of the school with natural light and contrast perfectly with the striking blue cladding panels that have been incorporated on the exterior façade to reflect the school's official colours.

Brae House Edinburgh





Products

SPW600 Windows

Located close to Edinburgh's famous Royal Mile, Brae House is a new student accommodation scheme that has been designed by Manson Architects and will provide 426 high quality residences.

Brae House's extensive façade features an attractive mix of traditional blonde sandstone, white render and Senior Architectural Systems' SPW600 aluminium windows which provide views across the city and down to the central courtyard around which the building is designed.

Fabricated and installed by specialists Marshall Brown for main contractor Watkins Jones, Senior's SPW600 aluminium windows provided the required thermal performance and aesthetic appeal for the high-profile city centre development.

Cancer & Genetics Centre Cardiff





Products

SPW300 Windows
SD Doors
SCW+ Curtain Wall

The wonderfully innovative design of the Cancer & Genetics Centre at Cardiff features striking fixed louvres to keep the south facing research laboratories cool and are colour coded to correspond to the sequence of the TSC2 gene. The gene was discovered by the Cardiff researchers as one that causes tuberous sclerosis, an inherited disorder associated with kidney, brain and other tumours.

The new building contains over 1,500m² of floor space with two floors dedicated to laboratories. The entrance features a curtain wall installed to a height of 11m and abutting a concrete rendered truncated cone, designed to create a focal point and soften the buildings composition. The curtain wall screen runs inside the cone with a 90 degree return back to the internal face. The curtain wall glazing on the ground and first floor of the main elevation is broken into four 1,650mm modules containing opaque glass panels of varying colours representing a DNA profile.

The Pavilions Tottenham Hale





Products

PURe® Windows **SPW600e Doors**

As well as offering its residents some of the most spectacular views across London, the energy-efficient windows of the latest phase of the Pavilions development in Tottenham Hale also provide some of the lowest U-values available thanks to the use of Senior Architectural System's new PURe® system.

Senior's PURe® windows are the first on the UK market to benefit from an enhanced thermal barrier manufactured from expanded polyurethane foam (PUR) to give U-values as low as 0.71W/m²K when calculated as a commercial CEN standard window. The PURe® windows have been fabricated by A Plus Aluminium and used alongside Senior's thermally enhanced SPW600e door systems, which provide access to the apartments' external balconies and terraces.

Forming a key part of the wider regeneration of Hale Village, the Pavilions comprises high specification, luxury waterside apartments that have been developed by Bellway Homes. With sustainable design being a prime consideration for RMA Architects, Senior's innovative PURe® windows have had a positive effect on reducing the overall carbon calculations of the building and perfectly complement the other 'green' features of the scheme which include nature roofs, open green spaces and wildlife corridors. The development itself will be powered by a state-of-the-art energy centre that is fuelled by recycled woodchip which is anticipated to help reduce greenhouse emissions by up to 54%.



Our innovative products speak for themselves but we believe the specification process should be a conversation and through early engagement, we can bring valuable solutions to the table.

From help with product choice and thermal calculations right through to quality control and guidance during the fabrication and installation process, we have the expertise and resources to support you every step of the way.



BES 6001: Issue 3.1
Cert/Ref No. RS0054





Senior Architectural Systems is a major UK supplier of glazing systems, specialising in providing aluminium systems to the highest standards. This brochure is intended to show what makes Senior's unique and how our products and services can make a difference to customers, clients, their projects and the environment.

Head Office

Senior Architectural Systems
Eland Road, Denaby Main, Doncaster,
South Yorkshire, DN12 4HA

T: 01709 772 600
E: info@sasmail.co.uk
W: www.seniorarchitectural.co.uk

Whilst every effort has been made to ensure the accuracy of this publication, no responsibility for content is taken by Senior Architectural Systems Ltd. We strongly recommend the specification for any given application is checked with Senior Architectural Systems before an order is placed. Senior Architectural Systems reserves the right to alter any of the specifications given in this publication without prior notice due to a process of continual development.



SENIOR ARCHITECTURAL SYSTEMS