



Low U-value
0.93
W/m²K

An innovative range of stylish
aluminium doors with unbeatable
thermal performance

PUR^e
DOOR SYSTEMS

PURe[®] DOORS

A revolutionary range of aluminium doors.

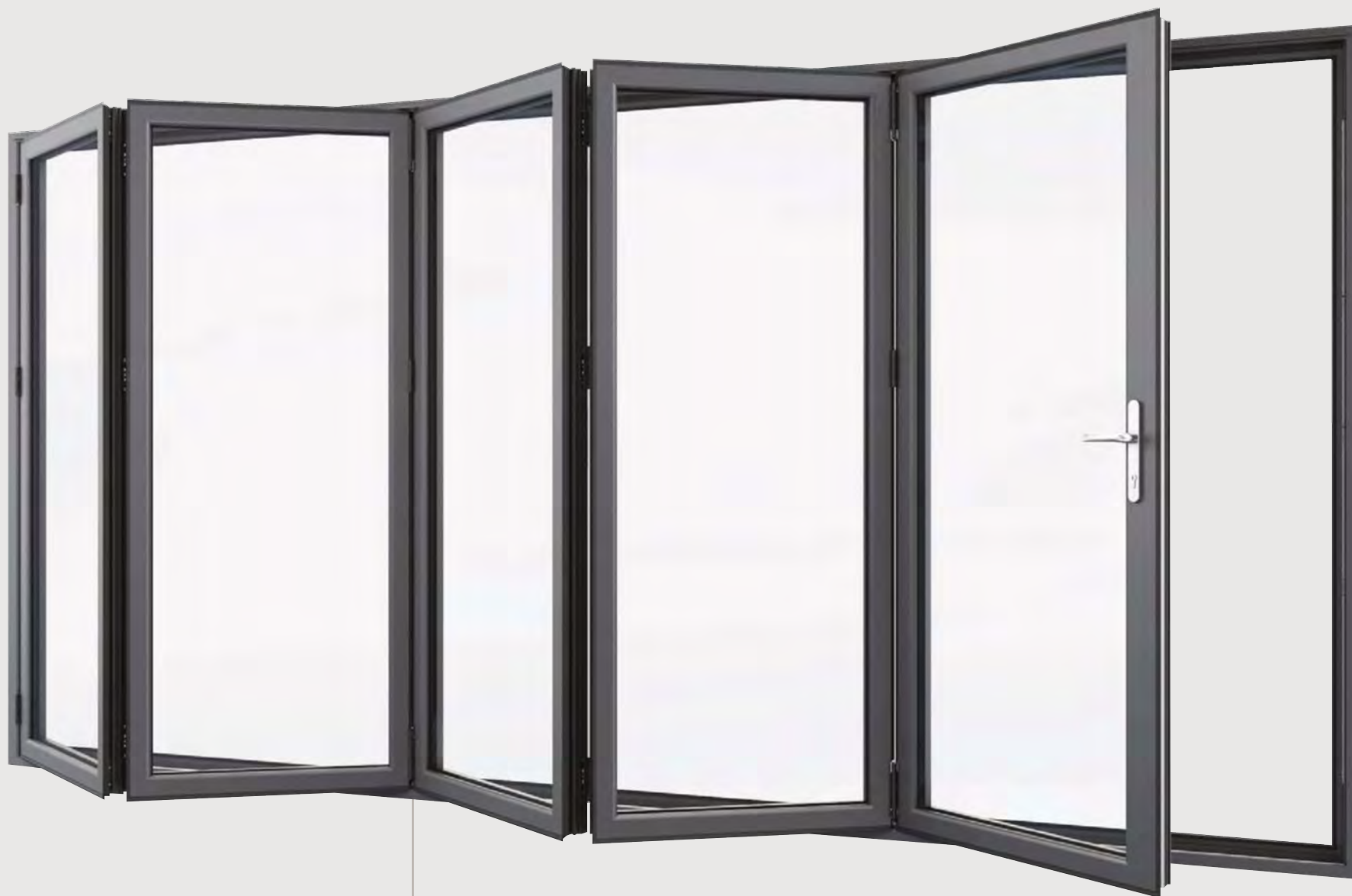
- 04 | thinking PURe[®]
- 06 | PURe[®] genius
- 08 | PURe[®] performance
- 10 | PURe[®] design
- 12 | PURe[®] choice
- 14 | PURe[®] piece of mind
- 16 | PURe[®] simplicity
- 18 | PURe[®] Senior
- 19 | your guarantee





THINKING PUR^e[®]

The PUR^e[®] door range has been developed by Senior Architectural Systems, one of the largest and most respected fenestration companies in the UK today. The system is the next generation of evolved products, designed to exceed current and meet future legislation.



Ultra low
U-value*

0.93
W/m²K

Glazing

**Double
Triple**

Recyclable

Cradle
- to -
Cradle

PURe® door systems

Offered with double or triple glazing, door options include single and double doors, folding sliding, inline slide and lift & slide, all of which are ideal for both new build and refurbishment applications.

*U-values as low as 0.93 W/m²K are achievable for our folding sliding door range, when calculated as a CEN standard.



PUR^e GENIUS

Style, performance and
a host of design options

Welcome to the range of innovative PUR^e aluminium doors from Senior Architectural Systems.

Designed and patented in the UK by our research and development team, PUR^e doors complement our PUR^e window range and feature a unique thermal break system delivering unbeatable thermal performance whatever the weather.

As for looks, the PUR^e door range has it all. From single to double, inline slide, folding sliding and lift & slide options for stunning unbroken views suitable for both new builds and refurbishments.

Add to that an almost endless choice of colours and finishes and it's easy to see why the PUR^e door system is set to revolutionise the aluminium door market.

- 1 Double/triple glazed high performance glazed units
- 2 Powder-coated durable aluminium in single/dual colour
- 3 High performance gasketry
- 4 Unique, patented PRe® thermal break

Patented PRe® innovation to future-proof your building

The PRe® range incorporates high insulation polyurethane foam (PUR) as an innovative thermal barrier - preventing the cold from getting in and the heat from getting out.

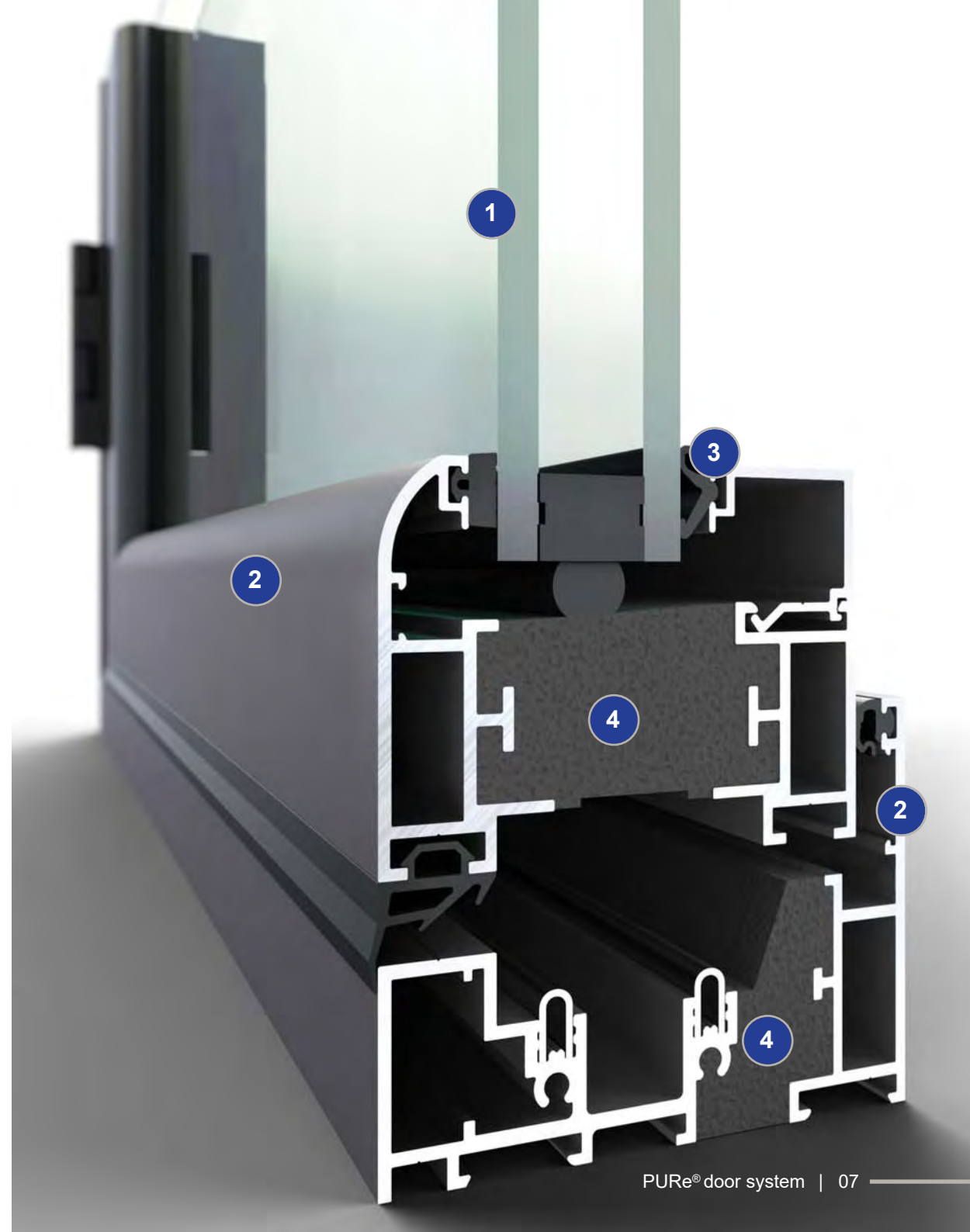
Already used for many years in the construction industry to provide insulation, PUR is fully recyclable, safe to handle and gives ultra-high thermal performance.

This ground-breaking patented use of PUR as a thermal barrier means that PRe® doors exceed current and will meet future Building Regulations.

In fact, PRe® aluminium doors can give U-values as low as $0.93 \text{ W/m}^2\text{K}$, when calculated as a commercial CEN standard door.

Easy to manufacture using existing tooling, the PRe® door range is the new, simple way to achieve unbeatable thermal performance with infinite design options.

PRe® provides a simple and cost effective way to future-proof your building.

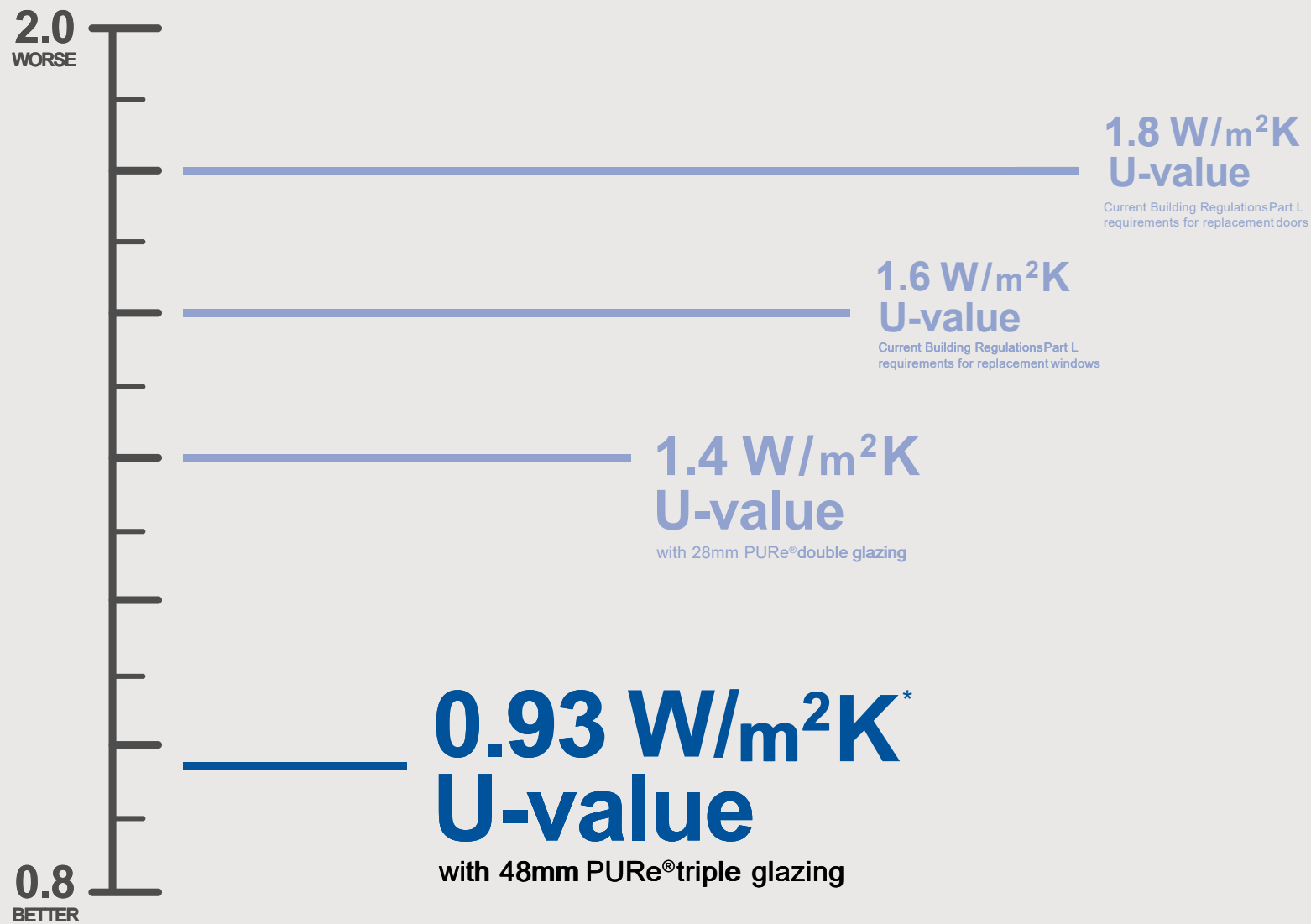


PURe[®] PERFORMANCE

PURe[®] doors allow U-values well below 1.0W/m²K to be achieved, giving significantly better thermal performance than other aluminium doors currently available on the market.

That means a substantial improvement in the building's carbon footprint and lower energy bills. The PURe[®] door system is designed to meet the highest thermal standards.

The benefits that the specification of PURe[®] doors can bring to a project are huge. PURe[®] doors are competitively priced compared to less thermally efficient aluminium doors. So main contractors can significantly reduce their CO₂ calculations without increasing costs, which means additional savings in the overall build cost can be made by reducing the need for features such as photovoltaic roof panels or expensive under floor insulation.



*U-values as low as 0.93 W/m²K are achievable for our folding sliding door range, when calculated as a CEN standard.

PURe[®] DESIGN

Style, elegance and practicality

The PURe[®] door range has been designed with style, elegance and practicality in mind. The result is a stunning array of doors, suitable for a range of projects.

Featuring narrow sightlines, PURe[®] doors are available in a wide range of configurations, with the option for further thermal enhancement for added energy savings.



PURe[®] SLIDE. Inline Slide Door.
- *perfect as a residential patio door*



PURe[®] SLIDE. Lift & Slide Door.
- *with a heavy duty option for larger sizes*

- Robust design to take leaf weights up to 160Kg for inline slide, 200Kg for lift & slide, and 300Kg for heavy duty lift & slide
- Full flexibility with heights of up to 3000mm
- Unique jointing method of head and cill allows thermal breaks to always line through with the door, for added thermal efficiency
- Further thermal enhancement available for added energy savings
- Precision engineering to effortlessly glide open
- 40+ years life expectancy*



PUR^e FOLD.Single Swing Door.
– *Open out or open in*



PUR^e FOLD.Double Swing Door.
– *Open out or open in*



PUR^e FOLD.Folding Sliding Door.
– *Open out or open in*

- Available in leaf sizes up to 1000mm x 2616mm
- Robust design to take leaf weights up to 100Kg
- Rebated low threshold option
- Single and double doors available in the same sections
- Intermediate weather seals for extra protection from the elements
- Further thermal enhancement available for added energy savings
- High tech roller design ensures years of trouble-free operation
- 40+ years life expectancy*

*When installed and maintained in accordance with manufacturer's recommendations.



PURe[®] CHOICE


Customise your colour,
glazing and accessories

Infinite colour range and choice of finishes

Choose from a full range of standard RAL colours and if you have a specific colour in mind, we can colour match for a bespoke solution. You can even choose to have dual colour, with different colours on the exterior and interior surfaces. Of course if you prefer an alternative look, we also supply PURe[®] doors with a metallic, textured or anodised finish.

With one of the largest and most technically advanced powder coating facilities in the UK, we can guarantee a high quality finish and fast turnaround times.



A detailed close-up photograph of a roller assembly on a door track. The rollers are made of polished metal and are mounted on a dark, possibly black, track. The lighting creates strong highlights and shadows, emphasizing the mechanical components and the smooth surface of the rollers. The background is dark and out of focus.

roller image

PURe[®] PEACE OF MIND

High quality, secure and weatherproof

Roller assembly

Ensuring a smooth, easily operated glide
to the PURe[®] folding sliding door.

Quality guaranteed

The PRe® door range uses premium quality materials sourced from reliable suppliers with strong environmental credentials, to produce a structural integrity that outperforms its rivals.

Independently tested to the highest standard in the UK, the innovative PUR thermal barrier produced superior shear testing results compared to similar products using polyamide thermal barriers.

Durable and fully recyclable, PRe® doors have a 40+ year life expectancy* and come with an extensive warranty.

Weathertight

Come rain, wind, hail or snow, PRe® doors will remain weathertight. Fully tested to BS6375 parts 1, 2 and 3, PRe® doors have been designed to keep the weather out and the warmth in.

Secure by design

PRe® doors have been developed to meet the Secure by Design (SBD) standards, which measure a door's ability to resist forced entry. Independently tested by a UKAS accredited laboratory to PAS24- 2012, PRe® doors have been awarded a Q-Mark certificate, confirming that they meet stringent security standards and are manufactured to a consistent quality. Security hardware is required.

*When installed and maintained in accordance with manufacturer's recommendations.



PURe[®] SIMPLICITY

Innovative features, easy
to fabricate and install

PURe[®] doors are easy to fabricate using existing tooling, and have been cleverly designed to be simple to adjust and install.

Threshold options

A choice of threshold options including low thresholds for easy, uninterrupted access.





PURe® FOLD

Folding sliding, single and double doors

- Fully adjustable hinge stile +/- 3mm, lock keep +/- 3mm and intermediate hinges - 2mm for easy installation.
- Easily accessible intermediate locks with no need for removal of door leaves.
- Adjustable shoot bolts +/- 1.5mm.



PURe® SLIDE

Inline sliding and lift & slide doors

- No need for complicated drainage preparations to outer frame track.
- Efficient fabrication with same sight lines and sections for standard duty lift & slide door and sliding door.
- Easy to lock with adjustable locking points.



PURe[®] SENIOR

Senior Architectural Systems is the UK's largest privately owned fenestration systems company.

Founded in 1991, our success is down to our continually evolving range of innovative high quality products and our responsive personal customer service.

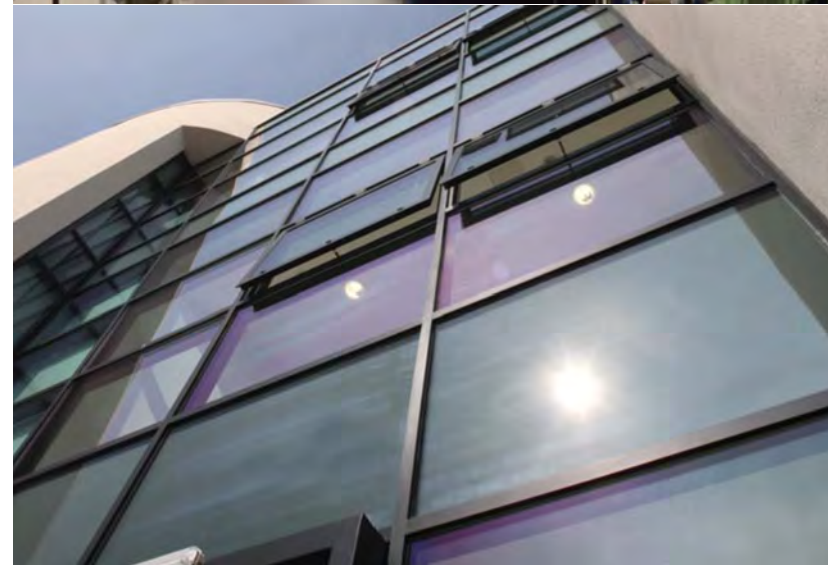
We offer a wide choice of fenestration products and systems which will suit any project size, quality specification and budget.

We can even supply bespoke solutions and are continually adding new products to the range based on customer feedback, market trends and technical innovations.

The new PURe[®] range of aluminium doors and windows with unbeatable thermal efficiency the PURe[®] range is set to revolutionise the window and door market.



SENIOR ARCHITECTURAL SYSTEMS



YOUR GUARANTEE

- British made - all our systems and products are designed and manufactured in the UK to exacting standards. Quality is assured through constantly monitored systems and processes through our dedicated ISO9001 quality accredited service centres in England, Wales and Scotland.
- All our products are fully accredited, have extended life cycles and are fully recyclable.
- We use only premium quality materials sourced from reliable suppliers with good environmental credentials.
- Our in-house state-of-the-art powder coating facility, dedicated glazing unit factory and thermal break line ensure a highly efficient and time sensitive turnaround.
- All our aluminium systems are fully compatible, giving you maximum design freedom.
- Expert technical and specification support is available nationwide, all year round.
- Dedicated service centres in England, Wales and Scotland, large stock levels and a fleet of eco delivery vehicles means timely delivery.
- We design our products to have a life expectancy of 40+ years.*

*When installed and maintained in accordance with manufacturer's recommendations.

An innovative range of stylish
aluminium doors with unbeatable
thermal performance

PURe[®]
DOOR SYSTEMS



SENIOR ARCHITECTURAL SYSTEMS

Senior Architectural Systems is a major UK supplier of fenestration solutions, specialising in providing aluminium, timber and glass glazing systems to the highest standards.

HEAD OFFICE

Senior Architectural Systems Ltd, Eland Road, Denaby Main, Doncaster, South Yorkshire, DN12 4HA.
Tel: 01709 772 600. E-mail: info@sasmail.co.uk

BRANCHES

Scotland; Unit 4 Dunlop Court, Deans Industrial Estate SW, Livingston, West Lothian, EH54 8SL.
Tel: 01506 407 640.

South; Unit 4 Leeway Industrial Estate, Newport, South Wales, NP19 4SL.
Tel: 01633 277 880.

www.seniorarchitectural.co.uk

