



# BREEAM

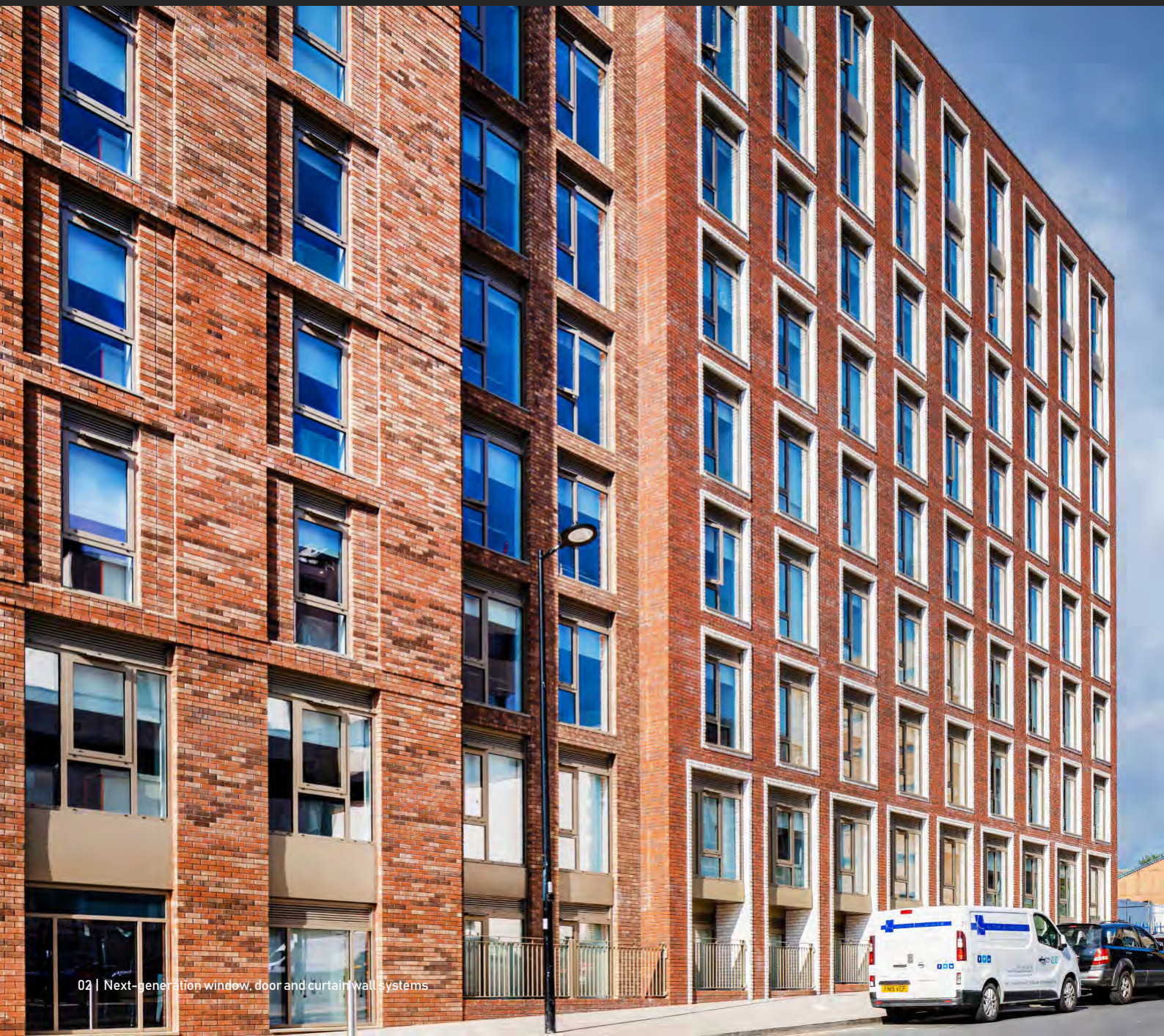
Next-generation window, door and curtain  
wall systems



SENIOR ARCHITECTURAL SYSTEMS



# architectural fenestration systems that bring environments to life







# From initial design to final installation, Senior provides a range of solutions to help you achieve a credible **BREEAM** assessment rating.



Our goal is to develop innovative window, door and curtain wall systems that bring environments to life.



With over thirty years of experience to our credit, Senior Architectural Systems' reputation is that of an innovative driver of the fenestration market, offering technical excellence, performance, value, and creativity to the fabricators, architects and contractors with which we are proud to be associated.

As well as being totally focused on product development and customer service, Senior Architectural Systems also works within a green agenda, demonstrating our commitment to the environment for now and future generations.

## contents

- 04 company introduction
- 07 taking the environment seriously
- 08 an introduction to **BREEAM®**
- 10 helping you achieve BREEAM credits
- 12 case studies

after thirty years in  
business we are known  
for our down-to-earth  
approach





Senior Architectural Systems offers a variety of windows, doors and curtain wall systems. We also provide product experience, training, support and sourcing for any commercial, residential or public building project.

After thirty years in business we are well known for our uncorporate down-to-earth cooperative approach. Fabricators, architects and contractors around the UK tell us that's why they choose to deal with Senior rather than anyone else.

As well as being totally committed to customer service, we actively work with a green agenda, demonstrating our commitment to the environment for now and future generations.

“ Our future depends on the foundations we put down today. This underpins our company, our people and our product development - not just meeting today's needs but building for the future now. ”

**Mark Wadsworth**  
Managing Director





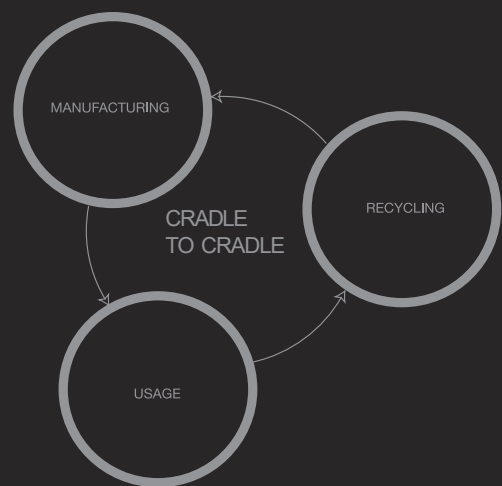


# taking the environment seriously

We are aware of the impact that buildings have on the environment, and we take a lifecycle responsibility for the products that we manufacture and deliver.

We minimise the risk of any chemical releases during manufacturing, and our aluminium systems are perfect for producing low maintenance, energy efficient windows and façades that have a long life.

Our metal of choice is aluminium. It recycles perfectly without losing any of its properties.



# an introduction to **BREEAM<sup>®</sup>**

## **What is BREEAM?**

BREEAM (Building Research Establishment's Environmental Assessment Method) is the world's foremost environmental assessment method and rating system for buildings, with 250,000 buildings with certified BREEAM assessment ratings and over a million registered for assessment since it was first launched in 1990. The system sets the standard for best practice in sustainable building design, construction and operation.

## **Ten categories for a sustainable building**

A BREEAM assessment uses recognised measures of performance, set against established benchmarks, to evaluate a building's specification, design, construction and use.

Credits are awarded across ten categories based on the outcomes of the building assessed. The credits are then combined to provide a single score, achieving either a Pass, Good, Very Good, Excellent or Outstanding overall BREEAM rating.





Categories	Credits Available	Senior Architectural products impact
Management	11	No
Health & Wellbeing	14	Yes
Energy	24	Yes
Transport	9	No
Water	9	No
Materials	13	Yes
Waste	7	Yes
Land Use & Ecology	10	No
Pollution	12	No
Innovation	10	Yes
<b>Total</b>	<b>119</b>	

# helping you achieve **BREEAM**® credits

## Senior and BREEAM

Senior Architectural Systems product range has been developed with BREEAM at its centre. Our systems are proven to help you achieve a credible BREEAM rating. With many BREEAM rated projects already successfully utilising Senior products, we have a wealth of experience to assist the architect/designer in meeting their sustainability goals.

## How our products/systems fit

The Senior Architectural Systems suite of products allows the specifier to gain credits across a number of categories.

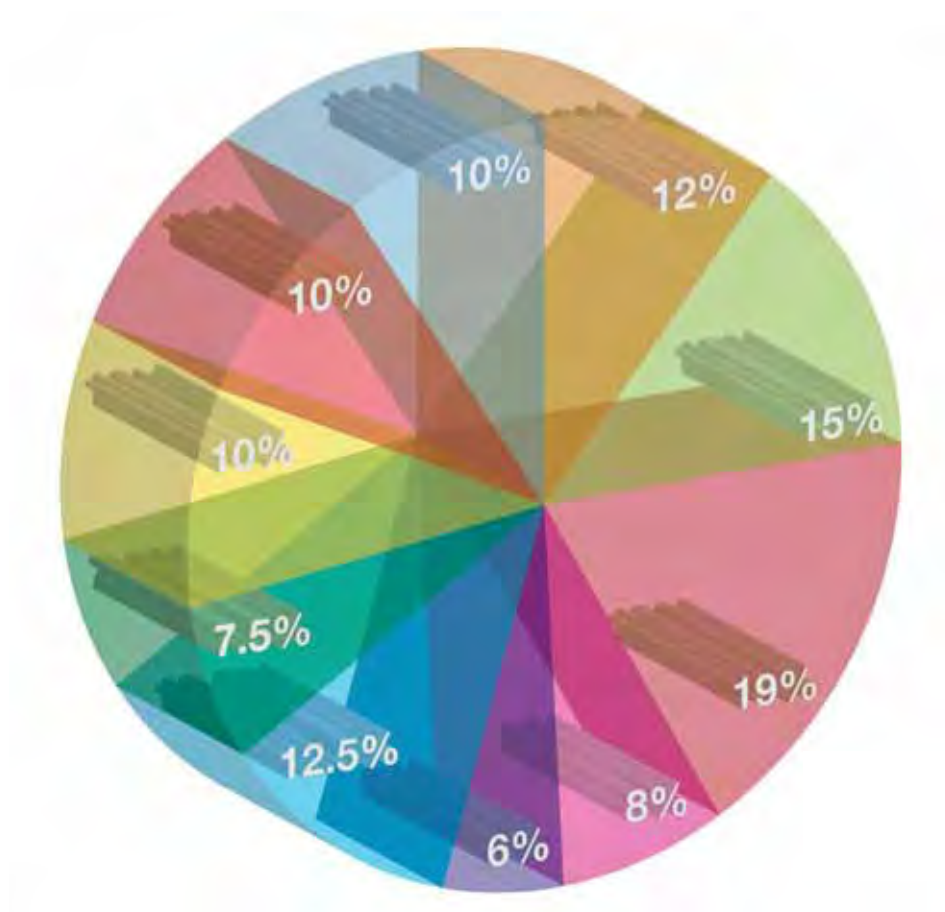
Alongside providing credits in the Materials and Health & Wellbeing categories, we can also assist in helping you meet the requirements of the Mat 5 responsible material sourcing category and thereby achieve up to three credits. Senior Architectural Systems holds ISO 9001, ISO 14001 and ISO 45001 accreditation.

Our thermally efficient systems, supported by thermal modelling of the fenestration elements can achieve up to 15 credits within the Ene 1 category.

The company is also able to work with the specifier to quickly develop additional features and benefits to gain credits from the Innovation category.



Using products from Senior Architectural System can help future projects **maximise the potential credits achievable.**



Health & Wellbeing		Energy		Waste	
Hea 1	daylighting 1 credit	Ene 1	energy efficiency part of 15 credits	Wst 2	recycled aggregates 1 credit
Hea 2	view out 1 credit				
Hea 3	glare control 1 credit				
Hea 9	volatile organic compounds 1 credit				
Hea 10	thermal control 2 credits				
Hea 13	acoustic performance 1 credit				
		Materials		Innovation	
		Mat 1	materials specification 4 credits		part of 10 credits
		Mat 5	responsible material sourcing 3 credits		



BREEAM rating 'Very Good'

## The Toybox Birmingham



**Architect:**  
Corstorphine & Wright

**Main Contractor:**  
Torsion Group

**Installer:**  
EYG Commercial

**Products:**  
SPW600 windows  
SF52 curtain wall

Awarded a UK BREEAM rating of 'Very Good', The Toybox shortlisted in 2019 for The Private Halls of Residence of the Year showcasing what can be achieved with great design and innovative materials. Built in the heart of the city centre on the former site of a toy factory and close to all four of Birmingham's universities, the 15-story building comprised 290 high spec student apartments as well as a shared garden space, laundry, gym, social areas and group study spaces.

Designed by Corstorphine + Wright architects the building has an eye-catching curved façade which creates a 9-metre cantilevered canopy over the main entrance on the ground floor. It features an attractive mix of green coloured brickwork, zinc cladding and the extensive use of Senior's SF52 curtain walling and SPW600 aluminium windows.





## Fusion Students Accommodation Sheffield

BREEAM rating 'Very Good'

This new student accommodation building located in the heart of Sheffield has been awarded a UK BREEAM rating of 'Very Good'. Delivered at a cost of £46.5 Million the scheme involved the construction of 4 blocks ranging in height from 6-storeys through to 17-storeys at the highest elevation, comprising 864 accommodation units.

Senior's energy efficient SPW600e windows were fitted with acoustic energy efficient insulated glass units to achieve a sound reduction index (RW) rating of 43. A light and welcoming space, was created in communal spaces using Senior's thermally enhanced SF52 fully capped two-storey aluminium curtain walling, whilst perimeter capped silicone glazed SF52 was chosen for the link bridge between accommodation blocks.

**Architect:**  
Corstophine & Wright

**Main Contractor:**  
ISG Limited

**Installer:**  
Acorn Aluminium

**Products:**  
SPW600e windows

SPW501 doors

SF52 curtain wall







BREEAM rating 'Very Good'

## Arts University Bournemouth



**Architect:**  
Design Engine Architects

**Main Contractor:**  
Morgan Sindall

**Installer:**  
Soundcraft

**Products:**  
SPW600 & Louvre Guard  
windows

PURe® SLIDE & PURe®  
Commercial doors

SPW600e & SPW501 doors

SF52 curtain wall

Sustainability and design were the major focus for this new £24 student accommodation project which achieved a 'Very Good' BREEAM rating.

Senior's highly thermally efficient glazing package was chosen to meet the scheme's sustainability criteria and budget. This included thermally enhanced SPW600 windows fitted with a Louvre Guard System in bedrooms and kitchens and with smoke vents in corridors for additional safety and security. With their innovative thermal break offering exceptional thermal efficiency, PURe® Commercial Doors were installed at the security office whilst PURe® SLIDE Lift & Slide doors were specified for the large communal area.





## Sharman Court Sheffield

BREEAM rating 'Very Good'

Located close to the city's universities, the new Sharman Court scheme on Sheffield's Broad Lane offers students high-specification accommodation in a central location.

With acoustic performance a key factor in minimising the impact of external noise from a busy city centre, Senior's PURE<sup>®</sup> aluminium windows were chosen by Kelsey Design Associates for use on the high-profile scheme.

Fabricated and installed by Continental Installations Ltd for main contractor Watkins Jones, the slim sightlines of the PURE<sup>®</sup> windows have also helped to create bright and airy interiors while providing a robust and low-maintenance solution that is both safe and secure.

**Architect:**  
Kelsey Design associates

**Main Contractor:**  
Watkins Jones

**Installer:**  
Continental Installations Ltd

**Products:**  
PURE<sup>®</sup> windows







BREEAM rating 'Excellent'

## Soar Valley School Leicester



**Architect:**  
ADP Architects

**Main Contractor:**  
Miller Construction Ltd

**Installer:**  
Acorn Aluminium Ltd

**Products:**  
SCW curtain wall

SPW300 windows

SD doors

Leicester's latest newly built school has been creatively designed and fitted with a suite of aluminium doors, windows and curtain wall from Senior Architectural Systems' high performance ranges, which collectively account for around 60% of the building's facade.

The building is simple and functional, yet the impressive result is a reflection of the school's aim to inspire and reflect the rich and diverse community it serves.





## Stourbridge College West Midlands

BREEAM rating 'Very Good'

Reflecting the campus' status as an innovator, the three-storey steel-framed Stourbridge College art and design faculty features dramatic angular glazing to nine elevations, using Senior Architectural Systems' SCW aluminium curtain walling and SPW300 series aluminium windows.

The glass fronted atrium forms a gallery showcase for exhibiting college sculpture and artwork. Dominating the skyline on the former Brier School site at Brierley Hill, and backing onto the Dudley Canal, the building is set at the front of the site leaving space for further development as future funding allows.

**Architect:**  
Pick Everard

**Main Contractor:**  
BAM Construction Ltd

**Installer:**  
Acorn Aluminium Ltd

**Products:**  
SCW curtain wall  
SPW300 window







BREEAM rating 'Excellent'

## Scape Student Accommodation London

**Architect:**  
Jefferson Sheard Architects

**Main Contractor:**  
Simons Construction Ltd

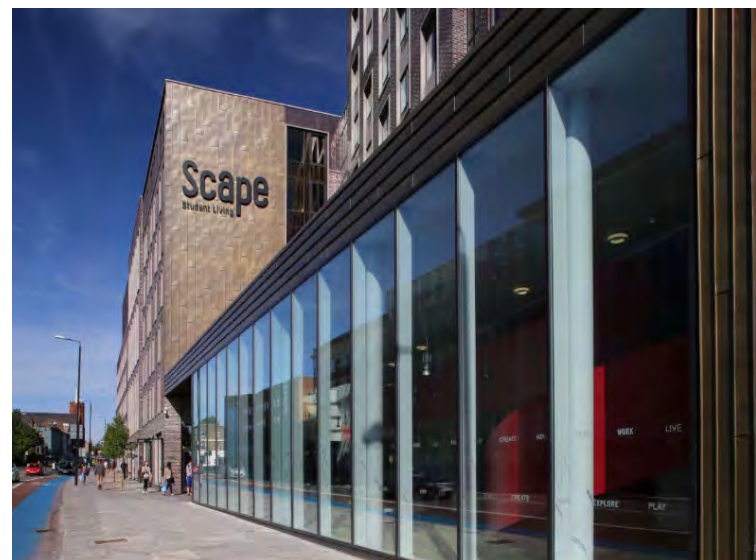
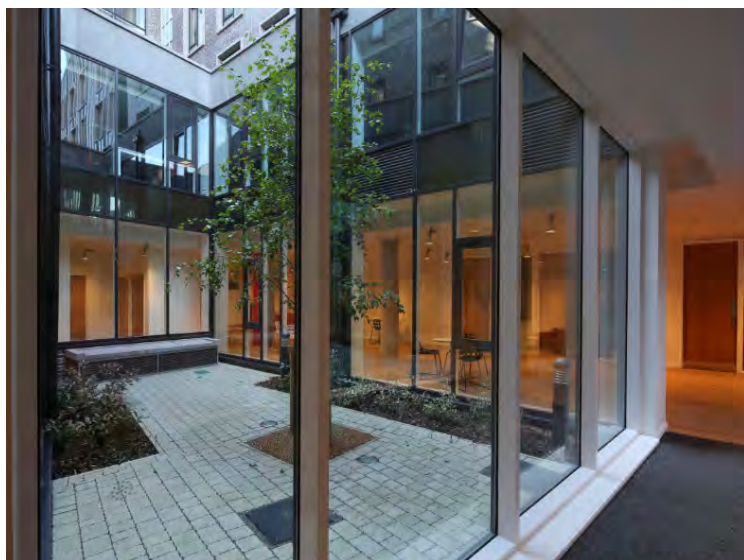
**Installer:**  
Denvall Co Ltd

**Products:**  
SPW600e door  
SD door  
SCW curtain wall

Jefferson Sheard Architects designed a building consisting of three primary blocks tiered in height. Sustainability issues are addressed by incorporating features such as green sedum roofing on two of the tiered blocks as well as ground source heating and cooling. With an innovative internal scheme by Ab Rogers, designers have created a bright, modern and cost effective solution to student living. Scape Living caters for 600 students with study bedrooms not more than 12.5 square metres in area.

A project that achieve both an innovative and colourful design as well as achieving an 'Excellent' BREEAM rating.







## HEAD OFFICE

Senior Architectural Systems Ltd, Eland Road, Denaby Main, Doncaster, South Yorkshire, DN12 4HA.  
Tel: 01709 772 600. E-mail: [info@seniorarchitectural.co.uk](mailto:info@seniorarchitectural.co.uk)

## BRANCHES

Scotland; Unit 4 Dunlop Court, Deans Industrial Estate SW, Livingston, West Lothian, EH54 8SL.  
Tel: 01506 407 640.

South; Unit 4 Leeway Industrial Estate, Newport, South Wales, NP19 4SL.  
Tel: 01633 277 880.

[www.seniorarchitectural.co.uk](http://www.seniorarchitectural.co.uk)



BES 6001: Issue 3.1  
Cert/Ref No. RS0054



Senior Architectural is a major UK supplier of fenestration solutions. This brochure is intended to show what makes Senior's unique and how our products and services can make a difference to customers, clients, their projects and the environment.



**SENIOR ARCHITECTURAL SYSTEMS**

Whilst every effort has been made to ensure the accuracy of this publication, no responsibility for content is taken by Senior Architectural Systems Ltd. We strongly recommend the specification for any given application is checked with Senior Architectural Systems before an order is placed. Senior Architectural Systems reserves the right to alter any of the specifications given in this publication without prior notice due to a process of continual development.